

# Milwaukee<sup>®</sup>

Nothing but **HEAVY DUTY**.<sup>™</sup>



# 2026

STORAGE CATALOGUE

# Milwaukee

## CONTENTS



PACKOUT™		Aprons	34
PACKOUT™ SETS	6	Utility Buckets	35
PACKOUT™ Rolling Storage	7–9	Bags and totes	36–37
PACKOUT™ Boxes + Drawers	10–11	Workbelts and rigs	38–39
PACKOUT™ Organisers	12–14		
PACKOUT™ Coolers	15		
PACKOUT™ Soft Storage	16–19	Steel storage	40–45
PACKOUT™ Mounting Plates	20	Filled TOOLGUARD™	46–48
PACKOUT™ Side attachments	21	Foam inserts	49–62
Trays and dividers	22–24		
PACKOUT™ Foam inserts	24–29		
PACKOUT™ Drinkware	29–31		
PACKOUT™ Shop storage	31–33		

# PACKOUT™

**MOST** VERSATILE  
**DURABLE**  
MODULAR STORAGE SYSTEM



SITE

TRANSIT

SHOP



SCAN NOW TO  
VIRTUALLY  
BUILD YOUR  
**PACKOUT™**  
SYSTEMS

## PACKOUT™ 3 piece set

- 1 x PACKOUT™ trolley box
- 1 x PACKOUT™ large box
- 1 x PACKOUT™ box



Contents	Pack quantity	Min. order quantity	Article Number	EAN Code
1 x PACKOUT™ trolley box, 1 x PACKOUT™ large box, 1 x PACKOUT™ box	3	1	4932464244	4058546221898

## PACKOUT™ transportation kit

- 1 x PACKOUT™ customisable work surface
- 1 x PACKOUT™ 2 drawer tool box
- 1 x PACKOUT™ 3 drawer tool box
- 1 x PACKOUT™ flat trolley



Description	Dimensions (Outer) (H x W x D / mm)	Pack quantity	Min. order quantity	Article Number	EAN Code
PACKOUT™ transportation kit	972 x 620 x 480	4	1	4932492892	4058546477639

## PACKOUT™ starter set

- 1 x PACKOUT™ trolley box
- 1 x PACKOUT™ 2-drawers tool box
- 1 x PACKOUT™ slim organiser



Description	Pack quantity	Min. order quantity	Article Number	EAN Code
PACKOUT™ starter set	3	1	4932479957	4058546377519

## PACKOUT™ rolling drawer

**NEW**

- Access your tools without unstacking boxes on top.
- Constructed with impact resistant polymers for jobsite durability.
- 113 kg weight capacity on top.
- 68 kg weight capacity inside.
- Metal reinforced corners for extra durability.
- Robust 228 mm all terrain wheels.
- Divider set and tray included for extra internal organisation.
- Side Mount Tool Box Attachments fit on the metal bars.
- Part of the PACKOUT™ modular storage system.



Description	Dimensions (Outer) (H x W x D / mm)	Pack quantity	Min. order quantity	Article Number	EAN Code
PACKOUT™ rolling drawer	665 x 570 x 480	1	1	4932498651	4058546525200

## Master Mechanics PACKOUT™ set

**NEW**

- Fully equipped PACKOUT™ filled with essential tools, neatly placed in foam inserts for best organization.
- FOUR FLAT™ sides on socket deter rolling and provide a wrench-ready design.
- 90 Tooth count ratchet design with 4° of arc swing for tight work spaces.
- MAX BITE™ combination spanner up to 25% more torque for better grip on rounded bolts.
- 144 Tooth ratcheting combination spanners teeth provide a 2.5° arc swing allowing access in tighter spaces.
- PACKOUT™ most versatile, durable modular storage system.
- Each filled box is also available individually for maximum flexibility.



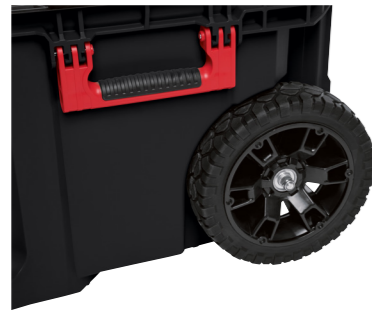
Description	Pack quantity	Min. order quantity	Article Number	EAN Code
382 Master Mechanics PACKOUT™ Hand Tool set	382	1		
244pc Filled PACKOUT™ 1/4, 3/8 and 1/2 Drive Ratchets and Sockets (4932501864), 62pc Filled PACKOUT™ Spanners (4932501865), 76pc Filled PACKOUT™ Screwdrivers, Pliers and Hammers Set (4932501866), PACKOUT™ Flat Trolley (4932471068), PACKOUT™ Customisable Work Surface (4932472128), PACKOUT™ Side Mount Hand Tool Holder (4932498644), PACKOUT™ Side Mount Tray (4932498647), SHOCKWAVE™ IMPACT DUTY bit set (48 pc) (4932492005)			4932501863	4058546645793

## PACKOUT™ trolley box

- Part of the PACKOUT™ modular storage system.
- Constructed with impact resistant polymers for jobsite durability.
- 113 kg weight capacity.
- Industrial grade extension handle.
- Oversized Ø 228 mm all terrain wheels.
- IP65 rated weather seal to keep out rain and jobsite debris.
- Metal reinforced corners.
- Metal reinforced locking point.
- Interior organiser tray.
- Mounting location for the ONE-KEY™ TICK™.



Description	Dimensions (Outer)(H x W x D / mm)	Pack quantity	Min. order quantity	Article Number	EAN Code
PACKOUT™ trolley box	650 x 561 x 472	1	1	4932464078	4058546220235

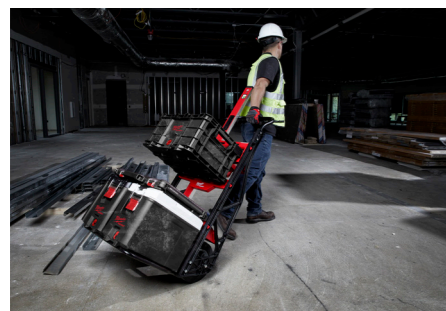


## PACKOUT™ 2 wheeled cart

- 2 integrated PACKOUT™ mounting locations for additional storage options.
- Integrated holder for longer tools, such as levels.
- 180 kg weight capacity.
- 25 cm in-board wheels easily roll through doorways.
- Folding base plate for easy storage.
- Part of the PACKOUT™ modular storage system.
- Constructed with impact resistant polymers for jobsite durability.



Description	Dimensions (Outer)(H x W x D / mm)	Pack quantity	Min. order quantity	Article Number	EAN Code
PACKOUT™ 2 wheeled cart	290 x 1200 x 510	1	1	4932472131	4058546325275



## PACKOUT™ rolling tool chest

- Dual Stack Top allows to transport 2 PACKOUT™ stacks onto the jobsite.
- 23 cm all-terrain wheels for easy rolling through rough jobsite terrain.
- Industrial grade extension handle supports up to 113 kg.
- Protective lid seal helps prevent damage to the tools from water and jobsite debris.
- Extra storage capacity for large tools and jobsite materials.
- Constructed with impact resistant polymers for jobsite durability.
- Part of the PACKOUT™ modular storage system.



Description	Dimensions (Outer) (H x W x D / mm)	Pack quantity	Min. order quantity	Article Number	EAN Code
PACKOUT™ rolling tool chest	401 x 965 x 609	1	1	4932478161	4058546340940

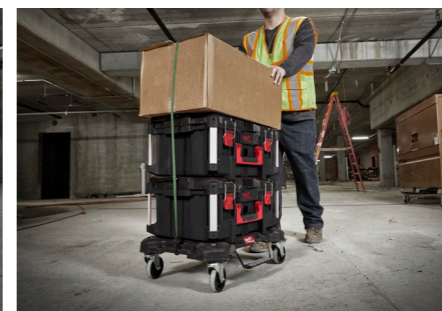


## PACKOUT™ flat trolley

- 113kg weight capacity.
- Durable casters to easily roll with heavy load on a jobsite.
- Includes 1 locking brake and 2 side locks to stop the trolley and easily connect the PACKOUT™ boxes and bags.
- Part of the PACKOUT™ modular storage system.



Description	Dimensions (Outer) (H x W x D / mm)	Pack quantity	Min. order quantity	Article Number	EAN Code
PACKOUT™ flat trolley	193 x 620 x 480	1	1	4932471068	4058546286965



## PACKOUT™ boxes

- Part of the PACKOUT™ modular storage system.
- Constructed with impact resistant polymers for jobsite durability.
- IP65 rated weather seal to keep out rain and jobsite debris.
- Metal reinforced corners.
- Metal reinforced locking point.
- Interior organiser trays.
- Mounting location for the ONE-KEY™ TICK™.
- Metal reinforced top handle for easier carrying (only on the large box).



Description	Dimensions (Outer) (H x W x D / mm)	Pack quantity	Min. order quantity	Article Number	EAN Code
① PACKOUT™ large box	282 x 561 x 411	1	1	4932464079	4058546220242
② PACKOUT™ box	165 x 561 x 411	1	1	4932464080	4058546220259

## PACKOUT™ drawer tool boxes

- Easy access to stored items, even with other PACKOUT™ boxes stacked on top.
- Steel ball bearing slides support up to 11 kg of weight per drawer.
- Quick-Adjust Dividers in each drawer to fully customise the layout for better organisation.
- Locking security bar prevents an unwanted opening of drawers during transit.
- Allows to lock the drawers with a padlock for theft protection.
- Constructed with impact resistant polymers and metal reinforced corners for jobsite durability.
- Part of the PACKOUT™ modular storage system.

Description	Dimensions (Outer) (H x W x D / mm)	Pack quantity	Min. order quantity	Article Number	EAN Code
PACKOUT™ 4 drawer tool box	363 x 564 x 414	1	1	4932493189	4058546480608
PACKOUT™ 2 drawer tool box	363 x 564 x 414	1	1	4932472129	4058546325251
PACKOUT™ 3 drawer tool box	363 x 564 x 414	1	1	4932472130	4058546325268
PACKOUT™ 2+1 drawer tool box	363 x 564 x 414	1	1	4932493190	4058546480615



## PACKOUT™ XL tool box

- Extra storage capacity for large power tools, such as band saws, angle grinders and hammers.
- 45 kg total weight capacity.
- Part of the PACKOUT™ modular storage system.
- Constructed with impact resistant polymers for jobsite durability.
- IP65 rated weather seal to keep out rain and jobsite debris.
- Metal reinforced corners.
- Interior organiser tray for smaller accessories.
- Mounting location for the ONE-KEY™ TICK™.



Description	Dimensions (Outer)(H x W x D / mm)	Pack quantity	Min. order quantity	Article Number	EAN Code
PACKOUT™ XL tool box	422 x 554 x 394	1	1	4932501784	4058546645007

## PACKOUT™ cabinet

- Stacks on PACKOUT™ boxes.
- Hangs on PACKOUT™ Wall Mounting Plates.
- Secure stacking and hanging due to lock mechanism on bottom and rear.
- Front door to easy access stored tools and items inside. Door can be slid into the box to make access easy and comfortable.
- Weight capacity: 22 kg.
- Constructed with impact resistant material.
- Part of the PACKOUT™ modular storage system.

Description	Dimensions (Outer) (H x W x D / mm)	Pack quantity	Min. order quantity	Article Number	EAN Code
PACKOUT™ cabinet	381 x 508 x 381	1	1	4932480623	4058546409081



## PACKOUT™ organisers

- Part of the PACKOUT™ modular storage system.
- Constructed with impact resistant polymers for jobsite durability.
- The interior features 10 removable & mountable bins that can be mounted onto common jobsite materials for easy access.
- IP65 rated weather seal to keep out rain and jobsite debris.
- No-travel bins seals to prevent the bins contents from migrating between bins during transport.



Description	Dimensions (Outer)(H x W x D / mm)	Pack quantity	Min. order quantity	Article Number	EAN Code
PACKOUT™ organiser	117 x 500 x 386	1	1	4932464082	4058546220273

## PACKOUT™ compact organiser

- Part of the PACKOUT™ modular storage system.
- Constructed with impact resistant polymers for jobsite durability.
- The interior features 5 removable & mountable bins that can be mounted onto common jobsite materials for easy access.
- IP65 rated weather seal to keep out rain and jobsite debris.
- No-travel bins seals to prevent the bins contents from migrating between bins during transport.



Description	Dimensions (Outer)(H x W x D / mm)	Pack quantity	Min. order quantity	Article Number	EAN Code
PACKOUT™ compact organiser	117 x 249 x 386	1	1	4932464083	4058546220280

## PACKOUT™ slim organiser

- Part of the PACKOUT™ modular storage system.
- Constructed with impact resistant polymers for jobsite durability.
- Interior features 2 large bins and 8 small bins. All bins contain dividers.
- No travel bin seals to prevent the bins contents from migrating between bins during transportation.
- IP 65 rated weather seal to keep out rain and jobsite debris.



Description	Dimensions (Outer)(H x W x D / mm)	Pack quantity	Min. order quantity	Article Number	EAN Code
PACKOUT™ slim organiser	64 x 500 x 414	1	1	4932471064	4058546286927

## PACKOUT™ compact slim organiser

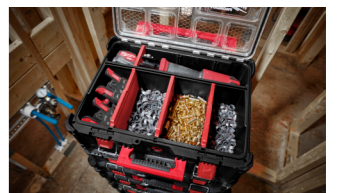
- Part of the PACKOUT™ modular storage system.
- Constructed with impact resistant polymers for jobsite durability.
- Interior features 1 large bin and 4 small bins. All bins contain dividers.
- No travel bin seals to prevent the bins contents from migrating between bins during transportation.
- IP 65 rated weather seal to keep out rain and jobsite debris.



Description	Dimensions (Outer)(H x W x D / mm)	Pack quantity	Min. order quantity	Article Number	EAN Code
PACKOUT™ compact slim organiser	64 x 249 x 411	1	1	4932471065	4058546286934

## PACKOUT™ deep organiser

- 50% higher than the standard PACKOUT™ organiser - ideal to store tools, batteries, chargers, larger fittings and other equipment.
- Quick Adjust Dividers allow users to customise storage to their needs.
- 22 kg total weight capacity.
- Part of the PACKOUT™ modular storage system.
- Constructed with impact resistant polymers for jobsite durability.
- IP 65 rated weather seal to keep out rain and jobsite debris.



Description	Dimensions (Outer)(H x W x D / mm)	Pack quantity	Min. order quantity	Article Number	EAN Code
PACKOUT™ deep organiser	178 x 507 x 386	1	1	4932478625	4058546348182

## PACKOUT™ tip bin organiser

- Constructed with impact resistant polymers for jobsite durability.
- Features 8 small and 2 large transparent bins.
- Bins can be tipped and taken out completely.
- Inside weight capacity 22.7 kg.
- Ergonomic handle for comfortable hold and transport.
- Stores small items like screws, bits, nails, washers, markers, knives.
- Hangs on the wall mounting plates and can be stacked on other PACKOUT™.



Description	Dimensions (Outer)(H x W x D / mm)	Pack quantity	Min. order quantity	Article Number	EAN Code
PACKOUT™ tip bin organiser	170 x 500 x 386	1	1	4932498323	4058546521929

## Large bin for PACKOUT™ tip bin organiser

- Transparent bin to fit into PACKOUT™ tip bin organiser.
- Includes removable divider.



Description	Pack quantity	Min. order quantity	Article Number	EAN Code
Large bin for PACKOUT™ tip bin organiser	1	1	4932500137	4058546573010

## PACKOUT™ crate

- Versatile stacking options: vertical and horizontal.
- 22 kg weight capacity.
- Large storage capacity for all kind of tools.
- Other PACKOUT™ products can be stacked on top of the crate.
- Part of the PACKOUT™ modular storage system.



Description	Dimensions (Outer)(H x W x D / mm)	Pack quantity	Min. order quantity	Article Number	EAN Code
PACKOUT™ crate	251 x 475 x 389	1	1	4932471724	4058546296230

## PACKOUT™ compact tool box

- Quick-Adjust Dividers allow users to store and organize larger equipment and accessories, such as fittings, connectors or caulk.
- Enough storage capacity to fit power tools like circular saws, grinders, drill drivers.
- 34 kg weight capacity.
- Constructed with impact resistant polymers for jobsite durability.
- IP 65 rated weather seal to keep out rain and jobsite debris.
- Part of the PACKOUT™ modular storage system.



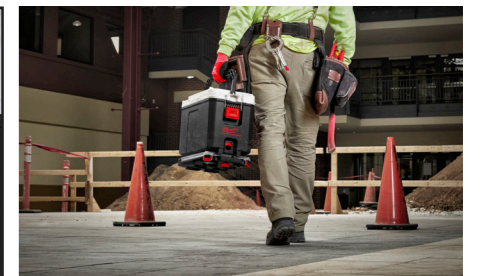
Description	Dimensions (Outer)(H x W x D / mm)	Pack quantity	Min. order quantity	Article Number	EAN Code
PACKOUT™ compact tool box	330 x 249 x 411	1	1	4932471723	4058546292232

## PACKOUT™ hard cooler

- Double premium insulation keeps contents cold for up to 30 hours.
- IP 65 Food Grade Leak-Proof Liner prevents leakages and protects contents from debris and dust.
- Integrated bottle opener.
- Removable tray for separate storage of personal items to keep them elevated above icy water.
- 15 l capacity.
- Constructed with impact resistant polymers for jobsite durability.
- Part of the PACKOUT™ modular storage system



Description	Dimensions (Outer) (H x W x D / mm)	Pack quantity	Min. order quantity	Article Number	EAN Code
PACKOUT™ hard cooler	330 x 249 x 411	1	1	4932471722	4058546296216



## PACKOUT™ XL cooler

- Double premium insulation keeps contents cold for up to 5 days.
- IP 65 Food Grade Leak-Proof Liner prevents leakages and protects contents from debris and dust.
- 38 l capacity.
- Removable tray for separate storage of personal items to keep them elevated above icy water.
- Integrated bottle opener.
- Constructed with impact resistant polymers for jobsite durability.
- Part of the PACKOUT™ modular storage system.



Description	Dimensions (Outer) (H x W x D / mm)	Pack quantity	Min. order quantity	Article Number	EAN Code
PACKOUT™ XL cooler	432 x 584 x 406	1	1	4932478648	4058546348410



## PACKOUT™ 38 cm closed tote tool bag

- Highest durability due to 1680D and 1800D ballistic material.
- Layering of fabrics increase the durability and performance.
- Reinforced edges, metal rings and springs for longest lifetime.
- 65 pockets for best organisation of tools.
- Shoulder strap and ergonomic carry handle.
- Holder for duct tapes for easy access.
- Molded PACKOUT™ base protects against humidity and debris.
- Part of the PACKOUT™ modular storage system.



Description	Dimensions (Outer) (H x W x D / mm)	Pack quantity	Min. order quantity	Article Number	EAN Code
PACKOUT™ 38 cm closed tote tool bag	510 x 460 x 260	1	1	4932493623	4058546484941



## PACKOUT™ structured backpack

- Highest durability due to 1680D and 1800D ballistic material.
- 42 pockets for best organisation of tools.
- 22.7 kg weight capacity.
- Best comfort due to cushioned back pad and shoulder straps.
- Ergonomic carry handle, lays down flat to save space.
- Molded PACKOUT™ base protects against humidity and debris.
- Part of the PACKOUT™ modular storage system.



Description	Dimensions (Outer) (H x W x D / mm)	Pack quantity	Min. order quantity	Article Number	EAN Code
PACKOUT™ structured backpack	630 x 430 x 230	1	1	4932498633	4058546525026



## PACKOUT™ pro tote toolbag

- Highest durability due to 1680D and 1800D ballistic material.
- Layering of fabrics increase the durability and performance.
- Reinforced edges, metal rings and springs for longest lifetime.
- 22.7 kg weight capacity.
- Numerous pockets for best organisation of tools.
- Shoulder strap and ergonomic carry handle.
- Holder for duct tapes for easy access.
- Molded PACKOUT™ base protects against humidity and debris.
- Part of the PACKOUT™ modular storage system.



Description	Type	Dimensions (Outer) (H x W x D / mm)	Pack quantity	Min. order quantity	Article Number	EAN Code
① PACKOUT™ 38 cm pro tote toolbag	35 internal and external pockets for best organisation.	460 x 440 x 270	1	1	4932498634	4058546525033
② PACKOUT™ 25 cm pro tote toolbag	39 internal and external pockets for best organisation.	480 x 380 x 230	1	1	4932493622	4058546484934



## PACKOUT™ tote toolbag

- Part of the PACKOUT™ modular storage system.
- 1680 ballistic material construction.
- Impact resistant molded base.
- All metal hardware.
- Durable overmolded handle.



Description	Dimensions (Outer) (H x W x D / mm)	No. of pockets	Pack quantity	Min. order quantity	Article Number	EAN Code
① 25 cm tote toolbag	300 x 250 x 320	28	1	1	4932464084	4058546220297
② 40 cm tote toolbag	250 x 400 x 430	31	1	1	4932464085	4058546220303
③ 50 cm tote toolbag	280 x 500 x 430	32	1	1	4932464086	4058546220310



## PACKOUT™ duffel bag

- Part of the PACKOUT™ modular storage system.
- Made from 1680D Ballistic Material for jobsite durability.
- Impact resistant polymer base protects contents from water, dirt and tear.
- Large storage capacity for larger tools.
- Cushioned shoulder strap, top and side handles for flexible carry.



Description	Dimensions (Outer) (H x W x D / mm)	Pack quantity	Min. order quantity	Article Number	EAN Code
① 38 cm PACKOUT™ duffel bag	427 x 381 x 254	1	1	4932471066	4058546286941
② 50 cm PACKOUT™ duffel bag	427 x 508 x 279	1	1	4932471067	4058546286958

## PACKOUT™ backpack

- Part of the PACKOUT™ modular storage system.
- Made from 1680D ballistic material for jobsite durability.
- 48 total pockets including a hard-shell protected instrument pocket.
- Extra back padding, chest strap, attachment strap for rolling bags and heavy duty harness for ultimate jobsite comfort.
- Impact resistant polymer base protects contents from water and dirt and also allows backpack to stand up.



Description	Dimensions (Outer) (H x W x D / mm)	Pack quantity	Min. order quantity	Article Number	EAN Code
PACKOUT™ backpack	508 x 381 x 292	1	1	4932471131	4058546287597

## PACKOUT™ tech bag

- Part of the PACKOUT™ modular storage system.
- Made from 1680D ballistic material for jobsite durability.
- 58 total pockets. Hardshell protected instrument pocket.
- Secure and protected storage for laptops and tablets.
- Impact resistant polymer base protects contents from water, dirt and tear.



Description	Dimensions (Outer) (H x W x D / mm)	Pack quantity	Min. order quantity	Article Number	EAN Code
PACKOUT™ tech bag	432 x 432 x 279	1	1	4932471130	4058546287580

## PACKOUT™ jobsite cooler

- Part of the PACKOUT™ modular storage system.
- 20l volume capacity with a dry compartment and a storage space for drinks.
- Extra insulation keeps contents cold for 24 hours.
- Impact resistant polymer base protects contents from water, dirt, and tear.
- Shoulder strap for easy transport.



Description	Dimensions (Outer) (H x W x D / mm)	Pack quantity	Min. order quantity	Article Number	EAN Code
PACKOUT™ jobsite cooler	406 x 394 x 254	1	1	4932471132	4058546287603

## PACKOUT™ racking system

- E-Track mounting rails can be mounted on the wall in vehicles, shops or garages for ultimate versatility.
- Quick release design for easy mounting, height adjustment and removal of the shelves.
- Each shelf supports up to 22 kg of weight.
- Metal reinforced frame.
- Impact resistant polymer construction.
- Part of the PACKOUT™ modular storage system.



Description	Dimensions (Outer)(H x W x D / mm)	Pack quantity	Min. order quantity	Article Number	EAN Code
① PACKOUT™ racking system kit (2 shelves + E-track)	508 x 546 x 447	4	1	4932472127	4058546325237
② PACKOUT™ racking system - single shelf	99 x 533 x 422	1	1	4932478711	4058546349042
③ Vertical E-track for PACKOUT™ racking system 50 cm	25 x 90 x 508	2	1	4932478996	4058546362782



## PACKOUT™ mounting plates

- Multiple mounting configurations.
- Turn PACKOUT™ into stationary shop storage.
- Connects to all MILWAUKEE® PACKOUT™ modular storage.
- Constructed with impact resistant polymers for highest durability.
- Metal reinforced mounting points for carrying high weights.
- Organise your shop together with PACKOUT™ boxes and wall accessories.

Description	Dimensions (Outer)(H x W x D / mm)	Pack quantity	Min. order quantity	Article Number	EAN Code
① PACKOUT™ mounting plate	28 x 594 x 467	1	1	4932471638	4058546295370
② PACKOUT™ compact mounting plate	25 x 254 x 508	1	1	4932480621	4058546409067
③ PACKOUT™ XL mounting plate	25 x 762 x 508	1	1	4932480622	4058546409074



## PACKOUT™ tool box side mount

- Hang on the side of PACKOUT™ to increase storage possibilities.
- Impact resistant material.
- Part of the PACKOUT™ modular storage system.

Description	Dimensions (Outer)(H x W x D / mm)	Pack quantity	Min. order quantity	Article Number	EAN Code
① PACKOUT™ side mount adapter (2 pack)	52 x 122 x 45	2	1	4932498643	4058546525125
② PACKOUT™ side mount hand tool holder	154 x 294 x 120	1	1	4932498644	4058546525132
③ PACKOUT™ side mount M18™ battery rack	135 x 292 x 68	1	1	4932498645	4058546525149
④ PACKOUT™ side mount M12™ battery rack	123 x 292 x 95	1	1	4932498646	4058546525156
⑤ PACKOUT™ side mount tray	125 x 294 x 140	1	1	4932498647	4058546525163
⑥ PACKOUT™ side mount mounting plate	240 x 420 x 68	1	1	4932498648	4058546525170
⑦ PACKOUT™ side mount long tool holder	upper part: 122 x 293 x 93; lower part: 156 x 360 x 115	1	1	4932498649	4058546525187
⑧ PACKOUT™ side mount 3-hook rail	120 x 290 x 110	1	1	4932498650	4058546525194



## PACKOUT™ customisable work surface

- Marine grade plywood top provides smooth surface for light assembly work, writing, sketching or working on a laptop.
- Fastener-ready surface allows for easy mounting of common jobsite materials and larger tools on top of a PACKOUT™ stack.
- 22 kg weight capacity.
- Part of the PACKOUT™ modular storage system.
- Constructed with impact resistant polymers for jobsite durability.

Description	Dimensions (Outer)(H x W x D / mm)	Pack quantity	Min. order quantity	Article Number	EAN Code
PACKOUT™ customisable work surface	53 x 607 x 389	1	1	4932472128	4058546325244



## PACKOUT™ tool tray

- Flexible additional organisation.
- Modular connectivity with PACKOUT™ components: stack on and store in other PACKOUT™ Tool Boxes.
- Fits inside of: PACKOUT™ Large Box, PACKOUT™ Trolley Box, PACKOUT™ XL Tool Box, PACKOUT™ Rolling Tool Chest.
- Top carry handle allows easy transport.
- Includes Quick-Adjust-Dividers for custom storage layouts.
- 11 kg weight capacity.
- Part of the PACKOUT™ modular storage system.



Description	Dimensions (Outer)(H x W x D / mm)	Pack quantity	Min. order quantity	Article Number	EAN Code
PACKOUT™ tool tray	127 x 503 x 297	1	1	4932480625	4058546409104

## PACKOUT™ crate divider

- Separates the PACKOUT™ Crate into multiple storage zones.
- The back wing allows half width PACKOUT™ products to sit on top of the Crate.
- Mounting holes for the attachment of chargers and other items.
- Part of the PACKOUT™ modular storage system.



Description	Dimensions (Outer)(H x W x D / mm)	Pack quantity	Min. order quantity	Article Number	EAN Code
PACKOUT™ crate divider	234 x 330 x 94	1	1	4932480624	4058546409098

## PACKOUT™ adaptor HD box

- Heavy duty boxes adaptor for PACKOUT™ system.
- Fits on top of PACKOUT™ boxes.
- Enables to carry heavy duty boxes on top of PACKOUT™ boxes for the most versatile storage solution.
- Made of impact resistant material.



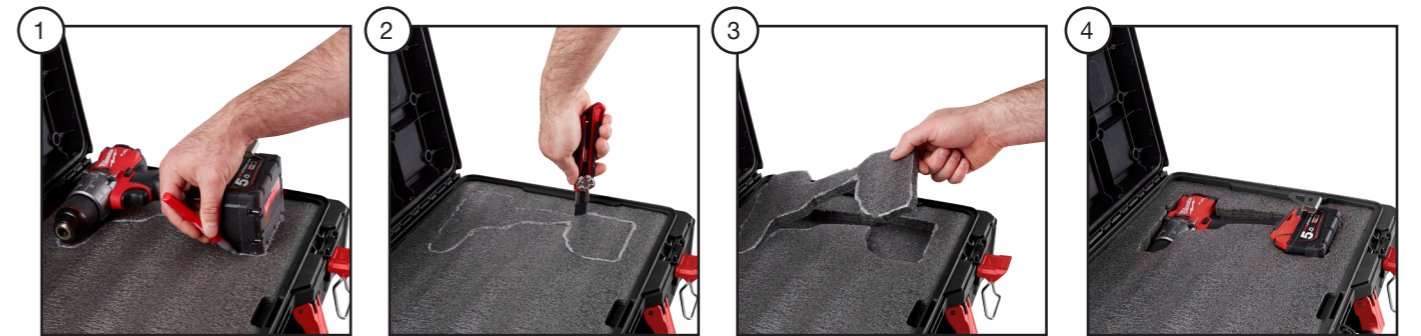
Description	Dimensions (Outer)(H x W x D / mm)	Pack quantity	Min. order quantity	Article Number	EAN Code
PACKOUT™ adaptor HD box	117 x 500 x 386	1	1	4932464081	4058546220266

## PACKOUT™ foam inserts

- Fully customisable - foam Insert allows you to fully customise your storage by cutting out custom pockets to securely store and protect your tools.
- Durable construction provides increased protection for tools.
- Optimised storage - allows easy access to the tools.
- Ref. 4932471428: Designed to fit in two PACKOUT™ boxes - tool box (4932464080) & large tool box (4932464079).
- Ref. 4932471927: Designed to fit in the PACKOUT™ trolley box (4932464078).



Description	Pack quantity	Min. order quantity	Article Number	EAN Code
PACKOUT™ foam insert	2	1	4932471428	4058546290566
PACKOUT™ trolley foam insert	1	1	4932471927	4058546298265
Foam insert for PACKOUT™ drawer tool boxes	2	1	4932479157	4058546369514



## Slim foam insert for PACKOUT™ drawer tool boxes

- Fully customisable - foam insert allows you to fully customise your storage by cutting out custom shapes to securely store and protect your tools.
- Customise your foam insert in 4 easy steps:
  1. Trace the shape of the product with an INKZALL™ marker.
  2. Use a snap knife to cut the outline.
  3. Peel out the layers of the foam to a desired depth.
  4. Place the tool in the foam insert.
- Ref. 4932493993 contains 2 pieces of foam. 1 piece of foam fits the height of the drawers of the 4-drawer tool box (4932493189) and the slim drawer of the 2+1 drawer tool box (4932493190); 2 pieces of foam fit the height of the large drawer of the 2+1 drawer tool box (4932493190).



Description	Dimensions (Outer)(H x W x D / mm)	Pack quantity	Min. order quantity	Article Number	EAN Code
Slim foam insert for PACKOUT™ drawer tool boxes	91 x 414 x 318	2	1	4932493993	4058546511531

## PACKOUT™ inserts

- Removable inserts for PACKOUT™ boxes and organisers.
- Ref. 4932478298: Organisation tray designed to fit PACKOUT™ trolley box (4932464078) and large box (4932464079).
- Ref. 4932478299: Set of organisation trays designed to fit PACKOUT™ box (4932464080).
- Ref. 4932478300: Set of organisation boxes designed to fit PACKOUT™ organiser (4932464082) and compact organiser (4932464083).
- Ref. 4932478301: Set of organisation boxes designed to fit PACKOUT™ slim organiser (4932471064) and compact slim organiser (4932471065).

Description	Pack quantity	Min. order quantity	Article Number	EAN Code
① Removable tray for PACKOUT™ trolley box and large box	1	1	4932478298	4058546344757
② Removable trays for PACKOUT™ box	4	1	4932478299	4058546344764
③ Removable bins for PACKOUT™ slim organiser and compact slim organiser	5	1	4932478301	4058546344788
④ Removable bins for PACKOUT™ organiser and compact organiser	5	1	4932478300	4058546344771
⑤ Drawer dividers for PACKOUT™ 3 drawer tool box	8	1	4932479104	4058546368982
⑥ Drawer dividers for PACKOUT™ 2 drawer tool box	8	1	4932479105	4058546368999



## 10pc PACKOUT™ drawer insulated electrician foam insert set

- Tested to 10,000 volts and guaranteed to 1,000 volts.
- Optimum leverage for easy and effortless work.
- Up to 60% less power required when cutting.
- Slim insulated coating for electrical applications in tight spaces.
- Tri-Lobe handle for maximum torque turning power.
- Anti roll handle.
- Premium foam for longer durability, laser cut sizes for easy and quick size identification and red background to identify quickly missing tools.

Description	Pack quantity	Min. order quantity	Article Number	EAN Code
10pc PACKOUT™ drawer insulated electrician foam insert set	10	1	4932493637	4058546485085

VDE Wire Stripping Plier 160mm (4932464573); VDE Long Round Nose Plier (4932464564); VDE Diagonal Cutter 160mm (4932464567); VDE Combination Plier 180mm (4932464572); TRILOBE VDE SCREWDRIVER SLOTTED 0.5 X 3 X 100 (4932478713); Voltage Tester (4932478719); TRI-LOBE VDE Screwdriver PZ 1x80mm (4932478725); PZ 2x100mm (4932478726); TRI-LOBE VDE SCREWDRIVER SLOTTED 0.8 X 4 X 100 (4932478715); 1.0 X 5.5 X 125 (4932478716)



## MAX BITE™ spanner and plier set PACKOUT™ foam insert

- MAX BITE™ open-end grip reduces rounding and stripping.
- Rounded I-Beam handle for comfortable handling grip.
- Ink-filled labels for clear visibility.
- Water pump plier with V-groove jaws with profile for firmer grip, more precise fit and reduced slipping.
- Precision machined joint for maximum power transmission with optimum leverage for easy and effortless work.
- Fits perfectly into the PACKOUT™ Drawer Tool Boxes.
- Premium foam for longer durability, laser cut sizes for easy and quick size identification and red background to identify quickly missing tools.



Description	Pack quantity	Min. order quantity	Article Number	EAN Code
MAX BITE™ spanner and plier set PACKOUT™ foam insert 19 pc	19	1	4932493339	4058546482107

8mm, 9mm, 10mm, 11mm, 12mm, 13mm, 14mm, 15mm, 16mm, 17mm, 18mm, 19mm, 20mm, 21mm and 22 mm combination spanner; 205mm long nose plier, 160mm diagonal cutter, 180mm water pump plier, 150mm adjustable wrench

## 10pc PACKOUT™ drawer screwdriver & plier foam insert set

- High torque ergonomic tri-lobe handle design is optimised for maximum user comfort and ideal for high torque applications.
- Permanent visual driver identification allows users to easily identify the correct driver type from multiple orientations.
- Hardened magnetic tips deliver maximum durability and fastener retention.
- Maximum power transmission for optimum leverage for easy and effortless work.
- Soft touch head design due to rounded edges to prevent hand injuries.
- Premium foam for longer durability, laser cut sizes for easy and quick size identification and red background to identify quickly missing tools.

Description	Pack quantity	Min. order quantity	Article Number	EAN Code
10pc PACKOUT™ drawer screwdriver & plier foam insert set	10	1	4932493638	4058546485092

Adjustable Water Pump Plier 250mm (4932492459); Combination Plier 180mm (4932492462); Long Nose Pliers 205mm (4932492465); Diagonal Cutting Plier 160mm (4932492463); TRI-LOBE SCREWDRIVER PZ1 x 100 (4932471791); PZ2 x 125 (4932471793); TRI-LOBE SCREWDRIVER SL 0.5x3x75 (4932471775); SL 0.8x4x100 (4932471778); SL 1.0x5.5x125 (4932471779); SL 1.2x6.5x125 (4932471781)



## 8pc PACKOUT™ drawer plumbing foam insert set

- Water pump plier: double toothed jaw for maximum grip and induction hardened teeth with self-locking serration.
- Pliers: induction hardened cutting edges for longest lifetime.
- Hacksaw: tool free blade change for changing blades up to 10x faster.
- Mini copper tubing cutter: chrome rollers for added durability and extended performance.
- Premium foam for longer durability, laser cut sizes for easy and quick size identification and red background to identify quickly missing tools.



Description	Pack quantity	Min. order quantity	Article Number	EAN Code
8pc PACKOUT™ drawer plumbing foam insert set	8	1	4932493639	4058546485108

Adjustable Water Pump Plier 250mm (4932492459); Long Nose Pliers 205mm (4932492465); Diagonal Cutting Plier 160mm (4932492463); Reaming Pen (48224255); Compact Torpedo (4932472122); Compact Hacksaw (4932500041); Constant Swing Copper Tubing Cutter 42mm (48229252); Mini Copper Tubing Cutter 22 mm (48229258)

## 6pc PACKOUT™ drawer woodworking foam insert set

- All metal core for maximum durability.
- Striking metal end cap for longer handle life.
- SHOCKSHIELD™ grip reduces peak vibration, helps reduce fatigue and offers best-in-class grip durability.
- Premium foam for longer durability, laser cut sizes for easy and quick size identification and red background to identify quickly missing tools.



Description	Pack quantity	Min. order quantity	Article Number	EAN Code
6pc PACKOUT™ drawer woodworking foam insert set	6	1	4932493641	4058546485122

1/4" Beveled Edge Chisel (4932479892); 1/2" Beveled Edge Chisel (4932479893); 3/4" Beveled Edge Chisel (4932479894); 1" Beveled Edge Chisel (4932479895); 10in Trim Puller (4932478252); Steel RIP Claw Hammer 16oz/450g (4932478653)

## 55pc PACKOUT™ drawer 3/8" ratchet and ratcheting combination spanner foam insert set

- Ratcheting mechanism with 90 tooth count and 4° arc swing (more work in tight spaces).
- Sockets offer four flat sides for anti-roll, wrench-readiness and better grip for hand tightening.
- Ratchet offers 2.5° arc swing and 144 tooth count for better functionality in tight spaces.
- Spanners offer MAXBITE™ open-end grip with up to 25% more torque and better grip on rounded bolts.
- Foldable hex and torx keys enable easy access & storage solution.
- Ergonomic handle provides comfortable and secure grip.
- Premium foam for longer durability, laser cut sizes for easy and quick size identification and red background to identify quickly missing tools.



Description	Pack quantity	Min. order quantity	Article Number	EAN Code
55pc PACKOUT™ drawer 3/8" ratchet and ratcheting combination spanner foam insert set	55	1	4932493640	4058546485115

Metric 3/8" Ratchet + Socket Set 32pc (4932464945); MAX BITE™ Ratcheting Metric Combination Spanner Set 7pc (4932464993); 8pc Metric Folding Hex Key Set (4932480978); 8pc Folding Torx Key Set (4932480979)

## 4pc PACKOUT™ drawer cutting & measuring foam insert set

- Tool free blade change of the hacksaw for changing blades up to 10x faster.
- Up to 4x more durable metal lock on snap knife for longest lifetime.
- Tape with anti-tear coating at the first 15cm of the blade enables highest durability.
- Premium foam for longer durability, laser cut sizes for easy and quick size identification and red background to identify quickly missing tools.



Description	Pack quantity	Min. order quantity	Article Number	EAN Code
4pc PACKOUT™ drawer cutting & measuring foam insert set	4	1	4932493642	4058546485139

Set Hacksaw 300mm (48220050); Snap Knife 18 mm (48221961); Magnetic (Gen 4) 5m-30 - 4932498768; INKZALL™ Marker Black (48223100)



## 8pc PACKOUT™ drawer pliers foam insert set

- Maximum power transmission for optimum leverage for easy and effortless work.
- Soft touch head design due to rounded edges to prevent hand injuries.
- Double toothed jaw for maximum grip and induction hardened teeth with self-locking serration.
- Curved box joints enable larger gripping capacity.
- Premium foam for longer durability, laser cut sizes for easy and quick size identification and red background to identify quickly missing tools.



Description	Pack quantity	Min. order quantity	Article Number	EAN Code
8pc PACKOUT™ drawer pliers foam insert set	8	1	4932493643	4058546485146
Adjustable Water Pump Plier 180mm (4932492458); Adjustable Water Pump Plier 250mm (4932492459); Adjustable Water Pump Plier 300mm (4932492460); Combination Plier 165mm (4932492461); Combination Plier 180mm (4932492462); Long Nose Plier 205mm (4932492465); Diagonal Cutting Plier 160mm (4932492463); HD Diagonal Cutting Plier 200mm (4932492464)				

## 17pc PACKOUT™ drawer precision screwdriver foam insert set

- All metal core for up to 4x stronger for jobsite toughness.
- Longer shanks for more visibility & reach.
- 360° rotating back caps for more control.
- Precision machined bit tips offer for secure fit and longest lifetime.
- Chrome plated shanks increase tool life by reducing corrosion.
- Premium foam for longer durability, laser cut sizes for easy and quick size identification and red background to identify quickly missing tools.

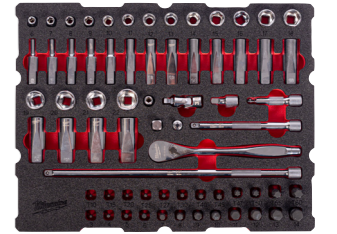


Description	Pack quantity	Min. order quantity	Article Number	EAN Code
17pc PACKOUT™ drawer precision screwdriver foam insert set	17	1	4932493644	4058546485153
Precision Screwdriver Set 6pc (PH00/PH0/SL1.6/SL2/SL3.2/SL4) (4932471869); Torx Precision Screwdriver Set 6pc (T6,T7,T8,T9,T10,T15) (4932471870); Tester 0.5 X 3 X 65 (4932478719); TRI-LOBE S/Driver PH2x125 (4932471788); TRI-LOBE S/Driver SL 0.8x4x100 (4932471778); TRI-LOBE S/Driver T20x100 (4932471801); Demolition Driver (4932480975)				

## 1/4" Ratchet and socket set PACKOUT™ foam insert

**NEW**

- Ratcheting mechanism with 90 tooth count and 4° arc swing (more work in tight spaces).
- FOUR FLAT™ sides on socket deter rolling.
- Single forged piece bit socket design adds durability in high torque applications.
- Chrome finish for corrosion and rust protection.
- Premium foam for longer durability, laser cut sizes for easy and quick size identification and red background to identify quickly missing tools.



Description	Pack quantity	Min. order quantity	Article Number	EAN Code
68 pc 1/4" Ratchet and socket set PACKOUT™ foam insert	68	1		
1/4" Drive socket standard: 4, 4.5, 5, 6, 7, 8, 9, 10, 11, 12, 13, 14 mm; 1/4" Drive Socket deep: 4, 4.5, 5, 6, 7, 8, 9, 10, 11, 12, 13, 14 mm; 1/4" Drive Metric Hex Bit Socket: 2, 2.5, 3, 4, 5, 6, 8mm; 1/4" Drive Torx Bit Socket: T8, T10, T15, T20, T25, T27, T30, T40; 1/4" Drive Ratchet (48229014); 1/4" Drive extension 38mm, 76mm, 152mm, 356mm (4932480637); 1/4" Drive Universal Joint Adapter (4932493357); 1/4" Drive 1/4" X 3/8" M Adapter (4932480646); 1/4" Drive Bit Holder for 1/4" Hex Bits (4932493961); 1/4" Drive spinner handle (4932493960); Hex Keys: 1.5, 2, 2.5, 3, 4, 5, 6, 8, 10mm (4932478621); L-Form Torx Key: T8, T9, T10, T15, T20, T25, T27, T30, T4 (4932492693)	4932501867	4058546645830		
Replacement 68 pc 1/4" ratchet and socket set PACKOUT™ foam insert	1	1	4932502032	4058546647483

## 3/8" Ratchet and socket set PACKOUT™ foam insert

**NEW**

- Ratcheting mechanism with 90 tooth count and 4° arc swing (more work in tight spaces).
- FOUR FLAT™ sides on socket deter rolling.
- Single forged piece bit socket design adds durability in high torque applications.
- Chrome finish for corrosion and rust protection.
- Premium foam for longer durability, laser cut sizes for easy and quick size identification and red background to identify quickly missing tools.



Description	Pack quantity	Min. order quantity	Article Number	EAN Code
67pc 3/8" Ratchet and socket set PACKOUT™ foam insert	67	1		
3/8" Drive Socket Standard: 6, 7, 8, 9, 10, 11, 12, 13, 14, 15, 16, 17, 18, 19, 20, 21, 22mm; 3/8" Drive Socket Deep: 6, 7, 8, 9, 10, 11, 12, 13, 14, 15, 16, 17, 18, 19, 20, 21, 22mm; 3/8" Drive Metric Hex Bit Socket 3, 4, 5, 6, 7, 8, 9, 10, 11, 12, 13, 14mm; 3/8" Drive Torx Bit Socket T10, T15, T20, T25, T27, T30, T40, T45, T47, T50, T55, T60; 3/8" Drive ratchet (48229038); 3/8" Drive extension 38mm, 76mm, 152mm, 356mm (4932480638); 3/8" Drive Universal Joint Adapter (4932493358); 3/8" Drive Bit Holder for 3/8" Hex Bits (4932493962); 3/8" Drive 3/8" X 1/2" M Adapter (4932480647); 3/8" Drive 3/8" X 1/2" M Adapter (4932480648)	4932501868	4058546645847		
Replacement 67pc 3/8" ratchet and socket set PACKOUT™ foam insert	1	1	4932502033	4058546647490

## 1/2" Socket set PACKOUT™ foam insert

**NEW**

- FOUR FLAT™ sides on socket deter rolling.
- Wrench ready FOUR FLAT™ sides.
- Stamped sizes for easy visibility.
- Chrome finish for corrosion and rust protection.
- Premium foam for longer durability, laser cut sizes for easy and quick size identification and red background to identify quickly missing tools.



Description	Pack quantity	Min. order quantity	Article Number	EAN Code
42pc 1/2" Socket set PACKOUT™ foam insert	42	1		
1/2" Drive Socket Std: 8, 9, 10, 11, 12, 13, 14, 15, 16, 17, 18, 19, 20, 21, 22, 23, 24, 25, 26, 27, 28, 30, 32mm; 1/2" Drive Socket Deep: 8, 9, 10, 11, 12, 13, 14, 15, 16, 17, 18, 19, 20, 21, 22, 23, 24, 27, 30, 32, 36mm	4932501869	4058546645854		
Replacement 42pc 1/2" socket set PACKOUT™ foam insert	1	1	4932502034	4058546647506

## 1/2" Ratchet and bit socket set PACKOUT™ foam insert

NEW

- Ratcheting mechanism with 90 tooth count and 4° arc swing (more work in tight spaces).
- FOUR FLAT™ sides on socket deter rolling.
- Single forged piece bit socket design adds durability in high torque applications.
- Designed for use with impact drivers the SHOCKWAVE™ IMPACT DUTY accessory line is not only ideal for heavy duty impact applications, but also delivers a full system solution for all the user's drilling and fastening needs.
- Chrome finish for corrosion and rust protection.
- Premium foam for longer durability, laser cut sizes for easy and quick size identification and red background to identify quickly missing tools.



Description	Pack quantity	Min. order quantity	Article Number	EAN Code
67 pc 1/2" Ratchet and bit socket set PACKOUT™ foam insert	67	1		
1/2" Drive Metric Hex Bit Socket 4, 5, 6, 7, 8, 10, 12, 14, 17, 19mm, 1/2" Drive Torx Bit Socket T20, T25, T27, T30, T40, T45, T50, T55, T60, 1/2" Drive ratchet (4932471865), 1/2" Drive extension 76mm, 127mm, 254mm, 381mm (4932480639), 1/2" Drive universal joint (4932480650), 1/2" Drive 1/2" X 3/8" Adapter (4932480649), SHOCKWAVE™ IMPACT DUTY bit set 40 pc (4932492004), 1/2" Drive Bit Holder for 1/4" Hex Bits;			4932501870	4058546645861
Replacement 67 pc 1/2" ratchet and bit socket set PACKOUT™ foam insert	1	1	4932502035	4058546647513

## MAX BITE™ combination spanner set PACKOUT™ foam insert

NEW

- MAX BITE™ open-end grip reduces rounding and stripping.
- Rounded I-Beam handle for comfortable handling grip.
- 15° offset box for better accessibility.
- Ink-filled labels for clear visibility.
- Chrome alloy steel, chrome plated.
- Premium foam for longer durability, laser cut sizes for easy and quick size identification and red background to identify quickly missing tools.



Description	Pack quantity	Min. order quantity	Article Number	EAN Code
19 pc MAX BITE™ combination spanner set PACKOUT™ foam insert	19	1		
6, 7, 8, 9, 10, 11, 12, 13, 14, 15, 16, 17, 18, 19, 20, 21, 22, 24, 27mm			4932501871	4058546645878
Replacement 19 pc MAX BITE™ combination spanner set PACKOUT™ foam insert	1	1	4932502036	4058546647520

## MAX BITE™ Ratcheting combination spanner set PACKOUT™ foam insert

NEW

- MAX BITE™ open-end grip reduces rounding and stripping.
- Rounded I-Beam handle for comfortable handling grip.
- 144 Ratcheting teeth positions giving 2.5° arc swing allowing access in tighter spaces.
- Ink-filled labels for clear visibility.
- Chrome alloy steel, chrome plated.
- Premium foam for longer durability, laser cut sizes for easy and quick size identification and red background to identify quickly missing tools.



Description	Pack quantity	Min. order quantity	Article Number	EAN Code
17pc MAX BITE™ Ratcheting combination spanner set PACKOUT™ foam insert	17	1		
8, 9, 10, 11, 12, 13, 14, 15, 16, 17, 18, 19, 20, 21, 22, 24, 27mm			4932501872	4058546645885
Replacement 17pc MAX BITE™ ratcheting combination spanner set PACKOUT™ foam insert	1	1	4932502037	4058546647537

## Double ring offset spanner set PACKOUT™ foam insert

NEW

- 75° offset handle for better access in tight spaces.
- Rounded I-beam handle for comfortably applying torque.
- Ink-filled size labels for easy and quick size identification.
- Chrome finish for corrosion and rust resistance.
- Premium foam for longer durability, laser cut sizes for easy and quick size identification and red background to identify quickly missing tools.



Description	Pack quantity	Min. order quantity	Article Number	EAN Code
12pc Double ring offset spanner set PACKOUT™ foam insert	12	1		
6x7mm, 8x9mm, 10x11mm, 12x13mm, 14x15mm, 16x17mm, 18x19mm, 20x22mm, 21x23mm, 24x27mm, 25x28mm, 30x32mm			4932501873	4058546645892
Replacement 12pc Double ring offset spanner set PACKOUT™ foam insert	1	1	4932502038	4058546647544

## Double open end spanner set PACKOUT™ foam insert

NEW

- Slim head dimensions for access in tight areas.
- Rounded I-beam handle for comfortably applying torque.
- Ink-filled size labels for easy and quick size identification.
- Chrome finish for corrosion and rust resistance.
- Premium foam for longer durability, laser cut sizes for easy and quick size identification and red background to identify quickly missing tools.



Description	Pack quantity	Min. order quantity	Article Number	EAN Code
14 pc Double open end spanner set PACKOUT™ foam insert	14	1		
6x7mm, 8x9mm, 10x11mm, 12x13mm, 14x15mm, 16x17mm, 18x19mm, 20x22mm, 21x23mm, 24x27mm, 25x28mm, 27x29mm, 30x32mm, 34x36mm			4932501874	4058546645908
Replacement 14 pc Double open end spanner set PACKOUT™ foam insert	1	1	4932502039	4058546647551

## Demolition set PACKOUT™ foam insert

NEW

- Over moulded handle design for increased grip and reduced vibration while using the fiberglass engineer hammer.
- Pry bars with I-beam design and all-metal core for added durability.
- Dead blow hammer with precision balanced design and steel shot-filled head for optimised control.
- Premium foam for longer durability, laser cut sizes for easy and quick size identification and red background to identify quickly missing tools.



Description	Pack quantity	Min. order quantity	Article Number	EAN Code
6pc Demolition set PACKOUT™ foam insert	6	1		
Pry bar - 200mm, 300mm, Demolition driver (4932480975), 790g Dead blow hammer (4932492350), 907g Dead blow ball peen (4932492349), 800g Fiberglass engineers hammer (4932478664)			4932501875	4058546645915
Replacement 6pc demolition set PACKOUT™ foam insert	1	1	4932502040	4058546647568

## Screwdriver and circlip plier set PACKOUT™ foam insert

NEW

- Comfortable Tri-Lobe handle optimized for maximum user comfort and high torque applications.
- Easier and quicker internal-external conversion with anti-slip grooved and all metal dial for the circlip pliers.
- Double-sided bits in the 27 in 1 ratchet multi-bit screwdriver for widest range of applications.



Description	Pack quantity	Min. order quantity	Article Number	EAN Code
44pc Screwdriver and circlip plier set PACKOUT™ foam insert	44	1		
4 in 1 Precision Multi-Bit Screwdriver (4932480584), Torx precision screwdriver T6, T7, T8, T9, T10, T15 (4932471870), 27in1 multibit screwdriver Hex 2 mm & Hex 3mm / Hex 2.5mm & Hex 4mm / Hex 5mm & Hex 6mm / PH0 & SL 1.2x6.5 / PH1 & SL 0.6x4.5 / PH2 & SL 0.5x5.0 / PH3 & SL 0.8x5.5 / T10 & T15 / T20 & T30 / PZ1 & T25 / PZ2 & T27 / PZ3 & T40 / Hex 1.5mm & T9 (4932480583), Tri-lobe Screwdriver SL 1.2x6.5x125, PH1x100, SL 1.0x5.5x125, PH2x125, Medium Circlip Plier - Straight - 1.2mm(4932492490), Large Circlip Plier - Straight - 1.8mm (4932492493), Large Circlip Plier - 90° - 1.8mm (4932492495)			4932501876	4058546645922
Replacement 44pc screwdriver and circlip plier set PACKOUT™ foam insert	1	1	4932502041	4058546647575

## Hook and pick set PACKOUT™ foam insert

NEW

- Hook & pick with an all-metal core for long-lasting durability and rust protection.
- Chrome-plated shanks on hook & pick tools for reduced corrosion and added rust protection.
- Comfort-grip handle and precision knurling provide enhanced control and greater user comfort in hook & pick tools.
- Wire stripping capacity for 6 sizes from 0.75mm<sup>2</sup>, 1mm<sup>2</sup>, 1.5mm<sup>2</sup>, 2.5 mm<sup>2</sup>, 4 mm<sup>2</sup> to 6mm<sup>2</sup>.



Description	Pack quantity	Min. order quantity	Article Number	EAN Code
17pc Hook and pick set PACKOUT™ foam insert	17	1		
Multi-Purpose Wire Stripper with Crimper (4932493816), Hook & Pick: HD Flat hose pick, HD 90°hose pick, HD 45°hose pick, HD Hook hose pick, Straight pick, Offset hook, Hook, 90°hook (4932480569), STUD™ (Gen 3) 5m-33 - (4932498763), Compact Slide Utility Knife (4932492379), GP Utility Blades (48221905), Mini Flush Cutters (4932499024)			4932501877	4058546645939
Replacement 17pc hook and pick set PACKOUT™ foam insert	1	1	4932502042	4058546647582

## Plier set PACKOUT™ foam insert

NEW

- Optimum leverage for easy and effortless work with the MILWAUKEE® pliers.
- Deep-reach cross handles on long-reach pliers provide increased access in tight spaces.
- Multi-function gripping zones for grabbing a wide variety of materials such as screws, cables and round parts with MILWAUKEE® pliers.
- Premium foam for longer durability, laser cut sizes for easy and quick size identification and red background to identify quickly missing tools.



Description	Pack quantity	Min. order quantity	Article Number	EAN Code
8 pc Plier set PACKOUT™ foam insert	9	1		
Combination plier 180mm, Long nose plier 205mm, Diagonal cutting plier 160mm (4932492773), Combination Plier 180mm(4932492462), 45°long nose plier 205mm (4932492466), Adjustable Water pump plier 250mm(4932492459), PVC / Oil Filter Pliers(4932492511), Long reach pliers: Straight long reach plier, 45° long reach plier (4932492499)			4932501878	4058546645946
Replacement 8 pc plier set PACKOUT™ foam insert	1	1	4932502043	4058546647599

## Ratchet and socket PACKOUT™ Drawer foam insert

- 90 tooth design ratchet with 4° of arc swing for tight work spaces.
- FOUR FLAT™ sides on socket for an anti-roll and wrench-ready solution.
- Fits perfectly into the PACKOUT™ Drawer Tool Boxes.
- Premium foam for longer durability, laser cut sizes for easy and quick size identification and red background to identify quickly missing tools.

Description	Pack quantity	Min. order quantity	Article Number	EAN Code
① 1/2" Ratchet, socket and hex key set PACKOUT™ foam insert 70 pc	70	1	4932480716	4058546410018
1/2" drive ratchet; 10mm, 11mm, 12mm, 13mm, 14mm, 15mm, 16mm, 17mm, 18mm, 19mm, 20mm, 21mm, 22mm, 23mm, 24mm 1/2" drive standard sockets and 10mm, 11mm, 12mm, 13mm, 14mm, 15mm, 16mm, 17mm, 18mm, 19mm deep well sockets; 76mm and 127mm 1/2" drive extensions; 9 pc Hex key set; Shockwave™ Impact Rated Screwdriving Bits 2 x TX10 / 4 x TX15 / 5 x TX20 / 5 x TX25 / 5 x TX30 / 2 x TX40 / 1 x TX50, 1 x TX B07 / 1 x TX B08 / 1 x TX B09 / 1 x TX B10 / 1 x TX B015 / 1 x TX B020 / 1 x TX B025. 1 x Shockwave™ Impact Rated Bit Holders				
② 1/4" drive ratchet, socket, screwdriver and wrench set PACKOUT™ foam insert	35	1	4932480717	4058546410025
1/4" drive ratchet; 5mm, 5.5mm, 6mm, 7mm, 8mm, 9mm, 10mm, 11mm, 12mm, 13mm, 14mm, 15mm 1/4" drive standard and deep well sockets; 76mm and 152mm extensions, 1/4" driver universal joint; 6 Tri-Lobe screwdrivers (SL3 / SL 4 / SL5 / SL 6 / PH 1 / PH 2); 250mm adjustable wrench				



## PACKOUT™ tumbler

- Double wall vacuum insulation for all day hot & cold retention.
- Rotating magnetic closure for easy opening.
- 18/8 stainless steel for durability.
- Dishwasher safe.
- Twist and lock mechanism for connectivity with all PACKOUT™ components.

Description	Pack quantity	Min. order quantity	Article Number	EAN Code
PACKOUT™ tumbler 591 ml	1	6	4932479074	4058546368685
PACKOUT™ tumbler 887 ml	1	6	4932479075	4058546368692



## Packout™ bottles chug lids

- Double wall vacuum insulation for all day hot & cold retention.
- 18/8 stainless steel for highest durability.
- Dishwasher safe.
- Lids are compatible throughout all PACKOUT™ bottles and mugs.
- Twist and lock mechanism for connectivity with all PACKOUT™ components.
- Part of the PACKOUT™ modular storage system.

Description	Dimensions (Outer) (H x W x D / mm)	Pack quantity	Min. order quantity	Article Number	EAN Code
① Packout™ bottle 532 ml chug lid red	267 x 80 x 80	1	8	4932493991	4058546511517
Packout™ bottle 532 ml chug lid black	267 x 80 x 80	1	8	4932493992	4058546511524
Packout™ bottle 710 ml chug lid red	305 x 86 x 86	1	8	4932493465	4058546483364
② Packout™ bottle 710 ml chug lid black	305 x 86 x 86	1	8	4932493466	4058546483371
③ Packout™ bottle 1065 ml chug lid red	318 x 100 x 100	1	6	4932493467	4058546483388
Packout™ bottle 1065 ml chug lid black	318 x 100 x 100	1	6	4932493468	4058546483395
④ PACKOUT™ bottle 355 ml sip lid red	178 x 79 x 79	1	8	4932498977	4058546528461
Packout™ bottle 355 ml sip lid black	178 x 79 x 79	1	8	4932498978	4058546528478
⑤ Packout™ bottle 532 ml sip lid red	229 x 79 x 79	1	8	4932493473	4058546483449
Packout™ bottle 532 ml sip lid black	229 x 79 x 79	1	8	4932493474	4058546483456
⑥ Packout™ mug 532 ml sip lid red	229 x 79 x 120	1	6	4932493471	4058546483425
Packout™ mug 532 ml sip lid black	229 x 79 x 120	1	6	4932493472	4058546483432
⑦ PACKOUT™ chug lid	105 x 78 x 78	1	1	4932493464	4058546483357
⑧ Packout™ sip lid	66 x 78 x 78	1	1	4932493470	4058546483418



## PACKOUT™ plastic bottles

- Impact resistant tritan plastic.
- Dishwasher safe.
- Lids are compatible throughout all PACKOUT™ plastic bottles.
- Twist and lock mechanism for connectivity with all PACKOUT™ components.
- Part of the PACKOUT™ modular storage system.

Description	Dimensions (Outer) (H x W x D / mm)	Pack quantity	Min. order quantity	Article Number	EAN Code
① PACKOUT™ 740 ml plastic bottle chug lid red	286 x 79 x 79	1	8	4932498636	4058546525057
Packout™ 740 ml plastic bottle chug lid black	286 x 79 x 79	1	8	4932498639	4058546525088
Packout™ 1005 ml plastic bottle chug lid red	305 x 93 x 93	1	8	4932498637	4058546525064
② Packout™ 1005 ml plastic bottle chug lid black	305 x 93 x 93	1	8	4932498640	4058546525095
③ Packout™ 1420 ml plastic bottle chug lid red	337 x 99 x 99	1	6	4932498638	4058546525071
Packout™ 1420 ml plastic bottle chug lid black	337 x 99 x 99	1	6	4932498641	4058546525101
④ Packout™ plastic bottle chug lid	86 x 76 x 76	1	1	4932498642	4058546525118



## Packout™ mounting puck

- Mount all PACKOUT™ bottles, mugs and tumblers on flat surfaces.
- Easy mounting with screws or adhesive tape.

Description	Dimensions (Outer) (H x W x D / mm)	Pack quantity	Min. order quantity	Article Number	EAN Code
Packout™ mounting puck	18 x 86 x 86	1	1	4932493469	4058546483401



## PACKOUT™ shop storage power tool starter kit

- Includes PACKOUT™ XL mounting plate 4932480622, PACKOUT™ drill storage station 4932480712, M18™ battery holder 4932480709, M12™ battery holder 4932480708.

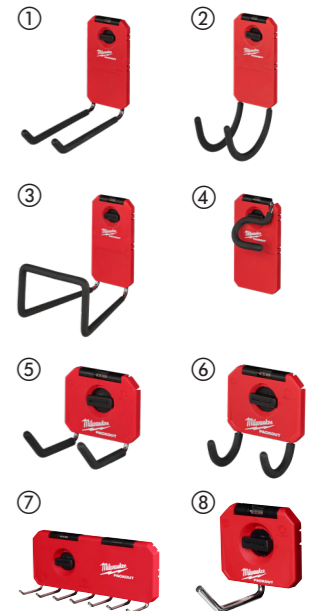
Description	Pack quantity	Min. order quantity	Article Number	EAN Code
PACKOUT™ shop storage power tool starter kit	4	1	4932493620	4058546484910



## PACKOUT™ storage hooks

- High strength steel hooks for storing even heavy tools and items.
- Hook coating protects hooks and stored items.
- Easy and fast access to all tools.
- Most secure and easy mounting with click & lock mechanism.
- Fully customise your shop according to your needs.
- Part of PACKOUT™ Shop Storage.

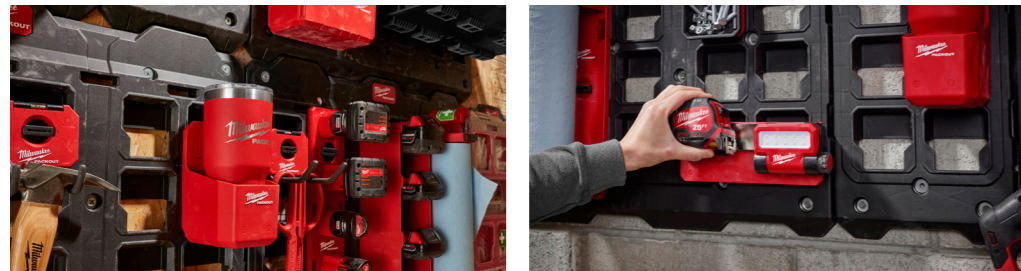
Description	Dimensions (Outer) (H x W x D / mm)	Pack quantity	Min. order quantity	Article Number	EAN Code
① PACKOUT™ straight utility hook	203 x 89 x 229	1	5	4932480700	4058546409852
② PACKOUT™ curved utility hook	279 x 89 x 152	1	5	4932480701	4058546409869
③ PACKOUT™ large hook	203 x 152 x 229	1	3	4932480702	4058546409876
④ PACKOUT™ large S hook	38 x 89 x 178	1	5	4932480703	4058546409883
⑤ PACKOUT™ small straight utility hook	102 x 89 x 102	1	5	4932480704	4058546409890
⑥ PACKOUT™ small curved utility hook	178 x 89 x 76	1	5	4932480705	4058546409906
⑦ PACKOUT™ small hook row	100 x 232 x 77	1	6	4932493384	4058546482558
⑧ PACKOUT™ single straight hook	98 x 98 x 120	1	5	4932493383	4058546482541



## PACKOUT™ storage racks

- Easy and fast access to all tools and items.
- Most secure and easy mounting with click & lock mechanism.
- Fully customise your shop according to your needs.
- Part of PACKOUT™ Shop Storage.

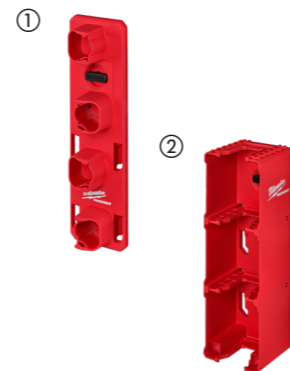
Description	Dimensions (Outer)(H x W x D / mm)	Pack quantity	Min. order quantity	Article Number	EAN Code
① PACKOUT™ cup holder	127 x 102 x 178	1	4	4932480706	4058546409913
② PACKOUT™ paper towel holder	165 x 102 x 330	1	5	4932480707	4058546409920
③ PACKOUT™ pliers rack	89 x 241 x 127	1	6	4932480710	4058546409951
④ PACKOUT™ screwdriver rack	90 x 236 x 90	1	6	4932480711	4058546409968
⑤ PACKOUT™ small shelf	254 x 241 x 89	1	5	4932480713	4058546409982
⑥ PACKOUT™ belt clip rack	90 x 234 x 40	1	6	4932493377	4058546482480
⑦ PACKOUT™ magnetic rack	92 x 234 x 65	1	4	4932493378	4058546482497
⑧ PACKOUT™ wire basket	172 x 252 x 190	1	4	4932493379	4058546482503



## PACKOUT™ battery holders

- Organise your batteries.
- Clip in batteries for secure storage.
- Easy and fast access to all batteries.
- Most secure and easy mounting with click & lock mechanism.
- Fully customise your shop according to your needs.
- Part of PACKOUT™ Shop Storage.

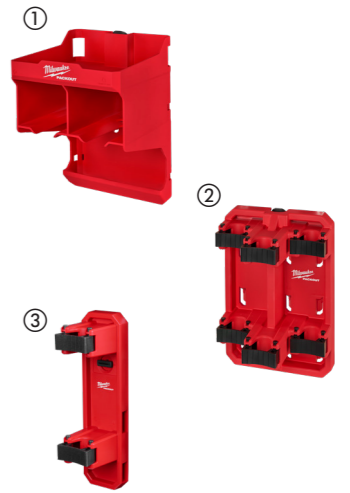
Description	Dimensions (Outer)(H x W x D / mm)	Pack quantity	Min. order quantity	Article Number	EAN Code
① PACKOUT™ M12™ battery holder	66 x 102 x 330	1	6	4932480708	4058546409937
② PACKOUT™ M18™ battery holder	102 x 102 x 330	1	4	4932480709	4058546409944



## PACKOUT™ easy access storage

- Easy and fast access to all tools.
- Most secure and easy mounting with click & lock mechanism.
- Fully customise your shop according to your needs.
- Part of PACKOUT™ Shop Storage.

Description	Dimensions (Outer)(H x W x D / mm)	Pack quantity	Min. order quantity	Article Number	EAN Code
① PACKOUT™ drill storage station	254 x 241 x 356	1	2	4932480712	4058546409975
② PACKOUT™ long handled storage	178 x 241 x 356	1	3	4932480714	4058546409999
③ PACKOUT™ single long handles storage	347 x 97 x 127	1	6	4932493382	4058546482534



## PACKOUT™ bins

- Stores screws, tapes and other small items.
- Nest bins come with removable dividers and interior trays for additional organisation.
- Hangs on PACKOUT™ Wall Mounting Plates.
- Nest Bins fit in PACKOUT™ Organizer (4932464082) & PACKOUT™ Compact Organizer (4932464083).
- Magnetic Bins fit in PACKOUT™ Slim Organizer (4932471064) & PACKOUT™ Compact Slim Organizer (4932471065).
- Magnetic Bins can be also attached to metal surfaces due to magnetic back.
- Constructed with impact resistant polymers.
- Part of PACKOUT™ Shop Storage.

Description	Dimensions (Outer)(H x W x D / mm)	Pack quantity	Min. order quantity	Article Number	EAN Code
① PACKOUT™ 10x10 cm nest bin	46 x 102 x 102	2	6	4932480698	4058546409838
② PACKOUT™ 10x20 cm nest bin	46 x 203 x 102	2	6	4932480699	4058546409845
③ PACKOUT™ magnetic bin 10x10 cm	10 x 10 x 45	1	6	4932493380	4058546482510
④ PACKOUT™ magnetic bin 10x20 cm	10 x 20 x 45	1	6	4932493381	4058546482527



## Linesman's compact aerial tool apron

- Durable vinyl construction.
- Dedicated pockets for better organisation.
- Auger bit holder won't burn through.
- Puncture resistant knife pockets for knife storage.
- Dedicated flood light pocket.
- Magnets hold sockets in place.
- Durable nickle plated brass eyelets.
- D-rings for more storage.
- Weep holes let water out.



Description	Dimensions (Outer) (H x W x D / mm)	Pack quantity	Min. order quantity	Article Number	EAN Code
Linesman's compact aerial tool apron	600 x 457 x 100	1	1	4932498652	4058546525217

## Linesman's aerial tool apron

- Durable vinyl construction.
- Dedicated pockets for better organisation.
- Auger bit holder won't burn through.
- Puncture resistant knife pockets for knife storage.
- Dedicated flood light pocket.
- Magnets hold sockets in place.
- Durable nickle plated brass eyelets.
- D-rings for more storage.
- Weep holes let water out.



Description	Dimensions (Outer) (H x W x D / mm)	Pack quantity	Min. order quantity	Article Number	EAN Code
Linesman's aerial tool apron	600 x 640 x 100	1	1	4932498653	4058546525224

## Aerial oval bag

- 1680D ballistic material construction.
- 2 puncture resistant knife pockets.
- Impact resistant molded base.
- 14 pockets for ultimate organisation.
- Weep holes let water out.
- 2 durable nickle plated brass eyelets.
- 2 D-rings for more storage.
- Carrying strap for easy transportation.
- Storage ideal for power tools, accessories and hand tools.



Description	Dimensions (Outer) (H x W x D / mm)	Pack quantity	Min. order quantity	Article Number	EAN Code
Aerial oval bag	265 x 729 x 370	1	1	4932498654	4058546525231

## Underground oval bag

- 1680D ballistic material construction.
- 2 puncture resistant knife pockets.
- 24 pockets for ultimate organisation.
- Weep holes let water out.
- 2 durable nickle plated brass eyelets.
- 2 D-rings for more storage.
- Carrying strap for easy transportation.
- Storage ideal for power tools, accessories and hand tools.



Description	Dimensions (Outer) (H x W x D / mm)	Pack quantity	Min. order quantity	Article Number	EAN Code
Underground oval bag	265 x 729 x 370	1	1	4932498655	4058546525248

## Textile utility bucket

- Swiveling metal carabiner.
- Weight capacity 34 kg.
- Durable material for long lifetime.
- Weep holes let water out.
- Reinforced ring keeps bag open.



Description	Dimensions (Outer) (H x W x D / mm)	Pack quantity	Min. order quantity	Article Number	EAN Code
Textile utility bucket	370 x 300 x 300	1	1	4932498656	4058546525255

## Textile utility bucket with pockets

- Swiveling metal carabiner.
- Weight capacity 34 kg.
- Durable material for long lifetime.
- Weep holes let water out.
- Reinforced ring keeps bag open.



Description	Dimensions (Outer) (H x W x D / mm)	Pack quantity	Min. order quantity	Article Number	EAN Code
Textile utility bucket with pockets	370 x 300 x 300	1	1	4932498657	4058546525262

## Ultimate jobsite backpack

- Constructed with 1680D ballistic material and with rugged metal zippers to provide increased durability.
- Hard molded base allows backpack to stand up and reduces ingress of dirt and water.
- Adjustable chest strap and attachment strap for rolling bags.
- Padded and breathable load-bearing harness evenly distributes the weight for more comfort and jobsite performance.
- 48 total pockets including 2 hardshell pockets to protect electronics and equipment from impact.
- Backpack provides exceptional organisation.



Description	Dimensions (Outer) (H x W x D / mm)	Pack quantity	Min. order quantity	Article Number	EAN Code
Ultimate jobsite backpack	240 x 457 x 518	1	1	4932464833	4058546227784



## Jobsite backpack

- Durable construction, made from 1680D ballistic nylon.
- Hard moulded base allows bag to stand-up and provides ultimate all-weather protection.
- Padded, breathable straps for ultimate comfort and jobsite performance.
- Large storage - 35 pockets in total.
- Fold down front pocket for easier access and storage of larger items. Side water bottle pocket.
- Vertical tool wall maximises storage space while allowing for bulk storage space.
- Laptop pocket allows protected storage for laptops/tablets and personal goods.
- Exterior daisy chains allow clip on storage.



Description	Dimensions (Outer) (H x W x D / mm)	Pack quantity	Min. order quantity	Article Number	EAN Code
Jobsite backpack	363 x 203 x 594	1	1	4932500309	4058546616113



## Tradesman backpack

- Durable construction, made from 1680D ballistic nylon.
- Padded straps for more comfort and jobsite performance.
- Laptop pocket allows protected storage for laptops/tablets and personal goods.
- 18 organiser pockets allow variety of options.



Description	Dimensions (Outer) (H x W x D / mm)	Pack quantity	Min. order quantity	Article Number	EAN Code
Tradesman backpack	360 x 210 x 520	1	1	4932464252	4058546221973

## Low profile backpack

- Constructed with 1680D ballistic material and with rugged metal zippers to provide increased durability.
- Reinforced base protects the backpack from being damaged by abusive jobsite conditions.
- Adjustable chest strap and attachment strap for rolling bags.
- Padded and breathable load-bearing harness evenly distributes the weight for more comfort and jobsite performance.
- 22 pockets including a padded electronic sleeve to provide ultimate organisation.



Description	Dimensions (Outer) (H x W x D / mm)	Pack quantity	Min. order quantity	Article Number	EAN Code
Low profile backpack	200 x 300 x 498	1	1	4932464834	4058546227791

## Jobsite cooler

- Constructed with 1680D ballistic material and with rugged metal zippers to provide increased durability.
- Specifically designed to be durable enough to withstand tough jobsite conditions.
- Cooler utilises double insulation and a food-grade leak proof liner to keep ice cold for 24 hours without leaking.
- Tape measure clip with a bottle opener provides ultimate versatility.
- Padded shoulder strap with metal hardware for ultimate durability.
- Tech pocket and dry storage compartment for storing tablets and electronic devices.



Description	Dimensions (Outer) (H x W x D / mm)	Pack quantity	Min. order quantity	Article Number	EAN Code
Jobsite cooler	280 x 350 x 380	1	1	4932464835	4058546227807

## Electricians pouch

- Robust construction, made from 1680D ballistic nylon.
- Double stitched with stronger riveted seams.
- Integrated handle allows easy transport and provides an easy mounting point on common jobsite materials.
- Solid base allows bag to stand-up, even when fully loaded.
- Integrated belt loops allow bag to be worn on a tool belt.
- Center mounted metal D-rings allow bag to hang evenly from shoulder strap.
- Metal tape measure clip securely stores tape for easy access.



Description	Pack quantity	Min. order quantity	Article Number	EAN Code
Electricians pouch	1	1	4932500308	4058546616106

## Electricians belt

- Robust construction, made from 1680D ballistic nylon.
- Double stitched with stronger riveted seams.
- Integrated handles allow easy transport of the pouch and provides easy mounting point on common jobsite materials.
- Padded, breathable belt for ultimate comfort and jobsite performance.
- Metal suspender attachments allow suspenders to be added.
- Metal tape measure clip securely stores tape for easy access.



Description	Pack quantity	Min. order quantity	Article Number	EAN Code
Electricians belt	1	1	4932500307	4058546616090

## Contractor rig

- Robust construction, made from 1680D ballistic nylon.
- Double stitched with stronger riveted seams.
- Padded 4-point harness distributes weight for all day comfort.
- Padded, breathable belt for ultimate comfort and jobsite performance.
- Integrated handle allows easy transport of the pouch and provides easy mounting point on common jobsite materials.
- Metal suspender attachments allow suspenders to be added.



Description	Pack quantity	Min. order quantity	Article Number	EAN Code
Contractor rig	1	1	4932500306	4058546616083

## Padded rig

- Adjustable straps designed to fit all users.
- 1680D ballistic material construction.



Description	Pack quantity	Min. order quantity	Article Number	EAN Code
Padded rig	1	1	4932500128	4058546572921

## Work belt

- Metal hardware and 1680D ballistic nylon provide a lifetime of service.
- Up to 152 mm (6") of padding and can accommodate waist sizes up to 143 mm (5 3/4").



Description	Pack quantity	Min. order quantity	Article Number	EAN Code
Work belt	1	1	4932500127	4058546572914

## HEAVY DUTY™ boxes

- Cases supplied with latches.

HD box size	Dimensions (Outer)(H x W x D / mm)	Pack quantity	Min. order quantity	Article Number	EAN Code
1	132 x 475 x 358	1	1	4932453385	4002395146376
3	230 x 475 x 358	1	1	4932453386	4002395143634
HD box size 2 - with FUEL™ logo	180 x 475 x 362	1	1	4932498753	4058546526221
HD Box 1 universal - supplied with foam in the lid		1	1	4932459751	4058546029234
Spare latches		2	1	4932373252	4002395347247
PACKOUT™ adaptor HD box	117 x 500 x 386	1	1	4932464081	4058546220266



# TOOLGUARD™ STEEL STORAGE



**CUSTOMISE YOUR  
TOOLGUARD™ STEEL  
STORAGE DRAWERS WITH  
OUR ONLINE FOAM INSERT  
CONFIGURATOR**

## TOOLGUARD™ 30" / 78 cm 7-drawer steel storage rolling cabinet

- 45 kg rated soft-close drawers.
- Bottom drawer rated at 90 kg.
- Anti-tilt protection allows only 1 drawer to be open at a time.
- Each drawer supplied with anti-slip mat inlay.
- Recessed ABS worktop with screwdriver holes and additional compartments.
- ABS corner bumpers prevent damages when moved around the garage.
- Magnetic power strip allows to charge batteries directly on the cabinet.
- Peg board with hooks and tool holders for an easy access to the most used tools.
- Additional side shelves for bottles and cans.
- Power tool organiser in the bottom drawer.
- 125 mm industrial casters (2x fixed, 2x swiveling with brakes).
- 800 kg total weight capacity.



Description	Dimensions (Outer)(H x W x D / mm)	Pack quantity	Min. order quantity	Article Number	EAN Code
TOOLGUARD™ 30" / 78 cm 7-drawer steel storage rolling cabinet	1064 x 810 x 524	1	1	4932478851	4058546361334

## TOOLGUARD™ 40" / 102 cm steel work cart

- 45 kg rated soft-close drawers.
- 90 kg rated sliding bottom shelf.
- Built-in storage compartments.
- 2 removable storage cups, which can be flipped upside down to create a flush surface or completely removed for vertical long tool storage.
- V-grooves to hold material when cutting or measuring.
- Foldable rear shelf with 22 kg weight capacity.
- 2 moveable shelves for storing bottles, sprays and other equipment.
- Rubber corner bumpers prevent damages when moved around the garage.
- Magnetic power strip allows to charge batteries directly on the cart.
- 125 mm industrial casters (2x fixed, 2x swiveling with brakes).
- 315 kg total weight capacity.



Description	Dimensions (Outer)(H x W x D / mm)	Pack quantity	Min. order quantity	Article Number	EAN Code
TOOLGUARD™ 40" / 102 cm steel work cart	1016 x 561 x 991	1	1	4932478857	4058546361396

## TOOLGUARD™ 30" / 78 cm 4-drawer steel storage top chest

- 45 kg rated soft-close drawers.
- Anti-tilt protection allows only 1 drawer to be open at a time.
- Each drawer supplied with anti-slip mat inlay.
- ABS corner bumpers prevent damages when moved around the garage.
- Additional side shelves for bottles and cans.



Description	Dimensions (Outer)(H x W x D / mm)	Pack quantity	Min. order quantity	Article Number	EAN Code
TOOLGUARD™ 30" / 78 cm 4-drawer steel storage top chest	810 x 524 x 498	1	1	4932478850	4058546361327

## TOOLGUARD™ 46" / 117 cm high capacity 10-drawer steel storage rolling cabinet

- 45 kg rated soft-close drawers.
- Bottom drawers rated at 90 kg.
- Each drawer supplied with anti-slip mat inlay.
- Rubber corner bumpers prevent damages when moved around the garage.
- Magnetic power strip allows to charge batteries directly on the cabinet.
- Foldable side shelf for bottles and cans.
- Integrated bottle opener.
- Power tool organiser in the bottom drawer.
- 150 mm industrial casters (2x fixed, 2x swiveling with brakes).
- 1360 kg total weight capacity.



Description	Dimensions (Outer)(H x W x D / mm)	Pack quantity	Min. order quantity	Article Number	EAN Code
TOOLGUARD™ 46" / 117 cm high capacity 10-drawer steel storage rolling cabinet	1170 x 562 x 982	1	1	4932478853	4058546361358

## TOOLGUARD™ 46" / 117 cm high capacity 6-drawer steel storage top chest

- 45 kg rated soft-close drawers.
- Each drawer supplied with anti-slip mat inlay.
- Work top drawer for writing or using a laptop.
- Independent locking safety drawer to securely store valuable items (phone, keys, documents).
- Rubber corner bumpers prevent damages when moved around the garage.
- Magnetic power strip allows to charge batteries directly on the chest.
- Peg board with hooks on the back wall for an easy access to the most used tools.



Description	Dimensions (Outer)(H x W x D / mm)	Pack quantity	Min. order quantity	Article Number	EAN Code
TOOLGUARD™ 46" / 117 cm high capacity 6-drawer steel storage top chest	1170 x 562 x 644	1	1	4932478855	4058546361372

## Can holder

- Holds spray cans or bottles.
- Compatible with the TOOLGUARD™ 27"/69cm Steel Rolling Cabinet (4932498252).



Description	Pack quantity	Min. order quantity	Article Number	EAN Code
Can holder	1	1	4932498955	4058546528249

## Paper towel holder

- Roll Holder for paper towels up to 30 cm width and 26 cm diameter.
- Compatible with TOOLGUARD™ pegboards of steel rolling cabinets 4932498252, 4932478849 and 4932478851.



Description	Pack quantity	Min. order quantity	Article Number	EAN Code
Paper towel holder	1	1	4932498956	4058546528256

## Single steel hook

- Universal metal single hook.
- Compatible with TOOLGUARD™ pegboards.

Description	Pack quantity	Min. order quantity	Article Number	EAN Code
Single steel hook	12	1	4932498957	4058546528263



## Double steel hook

- Universal metal double hook.
- Compatible with TOOLGUARD™ pegboards.

Description	Pack quantity	Min. order quantity	Article Number	EAN Code
Double steel hook	12	1	4932498958	4058546528270



## Magnetic power centre

- Socket strip with 3x sockets for EU or UK plug and 2x USB-A sockets (UK version 3x USB-A).
- Magnetic holder that enables to place the power centre on any metal surface.

Description	Pack quantity	Min. order quantity	Article Number	EAN Code
Magnetic power centre	1	1	4932498960	4058546528294



## TOOLGUARD™ Filled 30" / 78 cm 7-drawer steel storage rolling cabinet UK premium version

- 45 kg rated soft-close drawers & bottom drawer rated at 90 kg.
- Anti-tilt protection allows only one drawer to be open at a time.
- 125 mm industrial casters (2x fixed, 2x swiveling with brakes).
- 5 drawers filled with essential tools needed for automotive maintenance, neatly placed in foam inserts for best organization.
- M18FIW2F12 MID TORQUE IMPACT WRENCH: Power efficiency under load - outstanding torque of 339 Nm within an extremely compact design - total length of just 124 mm for access into tight spaces.
- 2x M18™ RESISTANT 5.0 AH BATTERY included: New housing material provides more protection against oils, solvents and greases.
- M12™ - M18™ FAST CHARGER: Recharges all M18™, M14™ and M12™ REDLITHIUM™ battery packs.



Description	Pack quantity	Min. order quantity	Article Number	EAN Code
246pc 30" / 78 cm red filled TOOLGUARD™ UK premium version	246	1	4932498186	4058546520557

119 pc 1/4", 3/8", 1/2" Ratchet & socket foam set (4932498518), 27 pc MAXBITE Metric combination spanner foam set (4932493247), 4 pc Pliers foam set (4932493631), 15 pc MAXBITE Metric ratcheting combination spanner foam set (4932479828), 10 pc Double open end spanner foam set (4932493629), 23 pc Trilobe screwdriver foam set (4932479830), 3 pc Circlip pliers foam set (4932493632), 2 pc Engineer and dead blow hammer foam set (4932493253), 3 pc Cutting and measuring foam set (4932493252), 32 pc 1/2" Shockwave STD foam set 1 (4932493392), M18FIW2F12-0 COMPACT IMPACT WRENCH (4933498058), 2x M18™ RESISTANT 5.0 AH BATTERY (4932479265), M12™ - M18™ FAST CHARGER (4932451080), Safety glasses clear (4932478763), 3 pcs Reusable corded ear plugs (4932471904), 30 INCH STEEL ROLLING CABINET (4932478849)

## TOOLGUARD™ Filled 30" / 78 cm 7-Drawer steel storage rolling cabinet UK standard version

- 45 kg rated soft-close drawers & bottom drawer rated at 90 kg.
- Anti-tilt protection allows only one drawer to be open at a time.
- 125 mm industrial casters (2x fixed, 2x swiveling with brakes).
- 5 drawers filled with essential tools needed for automotive maintenance, neatly placed in foam inserts for best organization.



Description	Pack quantity	Min. order quantity	Article Number	EAN Code
206pc 30" / 78 cm red filled TOOLGUARD™ UK Standard version	206	1	4932498187	4058546520564
119 pc 1/4", 3/8", 1/2" Ratchet & socket foam set (4932498518), 27 pc MAXBITE Metric combination spanner foam set (4932493247), 4 pc Pliers foam set (4932493631), 15 pc MAXBITE Metric ratcheting combination spanner foam set (4932479828), 10 pc Double open end spanner foam set (4932493629), 23 pc Trilobe screwdriver foam set (4932479830), 3 pc Circlip pliers foam set (4932493632), 2 pc Engineer and dead blow hammer foam set (4932493253), 3 pc Cutting and measuring foam set (4932493252), 30 INCH STEEL ROLLING CABINET (4932478849)				

## Master foam insert set universal 170pc

- Ideal mix of innovative hand tools for maintenance and repair, organized in premium foam inserts.
- Ratchets with 90 tooth design with 4 °of arc swing for tight work spaces.
- Combination Spanners with MAX BITE™ open-end grip reduces rounding and stripping.
- Screwdrivers with comfortable Tri-Lobe handle optimized for maximum user comfort and high torque applications.
- Premium foam for longer durability, laser cut sizes for easy and quick size identification and red background to identify quickly missing tools.



Description	Pack quantity	Min. order quantity	Article Number	EAN Code
Master foam insert set universal 170pc				
28pc 1/4" Ratchet and socket set foam insert (4932479824), 28pc 1/2" Ratchet and socket set foam insert (4932479826), MAX BITE™ Combination spanner set foam insert (4932479827), 23pc Trilobe screwdriver foam insert (4932479830), 8pc Folding torx key set (4932480979), Compact hex key 9pc set (4932492399), SHOCKWAVE™ IMPACT DUTY bit set 40 pc (4932492004), Metral drill HSSG ThW D338 Set 19pc (4932493869)	170	1	4932499473	4058546566371

## Master foam insert set automotive 172pc

- Ideal mix of innovative hand tools for automotive maintenance and repair, organized in premium foam inserts.
- Ratchets with 90 tooth design with 4 °of arc swing for tight work spaces.
- Combination Spanners with MAX BITE™ open-end grip reduces rounding and stripping.
- T-bar handle with 180° durable swiveling socket for best access in hard-to-reach angles.
- Screwdrivers with comfortable Tri-Lobe handle optimized for maximum user comfort and high torque applications.
- Premium foam for longer durability, laser cut sizes for easy and quick size identification and red background to identify quickly missing tools.



Description	Pack quantity	Min. order quantity	Article Number	EAN Code
Master foam insert set automotive 172pc				
28pc 1/4" Ratchet and socket set foam insert (4932479824), 28pc 1/2" Ratchet and socket set foam insert (4932479826), MAX BITE™ Combination spanner set foam insert (4932479827), 8pc T-bar handle set foam insert (4932499113), 23pc Trilobe screwdriver foam insert (4932479830), 3pc Pliers set foam insert (4932493256), 3PC Circlip Pliers Foam Insert Set (4932493632), 2pc Engineer and dead blow hammer set foam insert (4932493253), 1/2" SHOCKWAVE™ IMPACT DUTY automotive impact socket set (4932493370), SHOCKWAVE™ IMPACT DUTY bit set 40pc (4932492004), Metral drill HSSG ThW D338 Set 19pc (4932493869)	172	1	4932499474	4058546566388

## Master foam insert set industrial 244pc

- Ideal mix of innovative hand tools for industrial maintenance and repair, organized in premium foam inserts.
- Ratchets with 90 tooth design in 1/4", 3/8" and 1/2" drive sizes, with 4 °of arc swing for tight work spaces.
- Combination Spanners with MAX BITE™ open-end grip reduces rounding and stripping.
- Screwdrivers with comfortable Tri-Lobe handle optimized for maximum user comfort and high torque applications.
- Premium foam for longer durability, laser cut sizes for easy and quick size identification and red background to identify quickly missing tools.

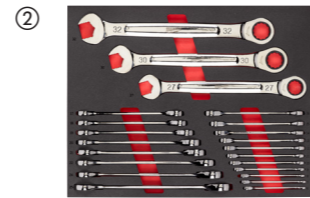


Description	Pack quantity	Min. order quantity	Article Number	EAN Code
Master foam insert set industrial 244pc				
28pc 1/4", 3/8" and 1/2" Ratchet and socket set foam insert (4932498518), MAX BITE™ Combination spanner set foam insert (4932479827), 10pc Double open end spanner foam insert set (4932493629), 23pc Trilobe screwdriver foam insert (4932479830), General tooling foam set 15pc (4932493257), 3PC Circlip Pliers Foam Insert Set (4932493632), SHOCKWAVE™ IMPACT DUTY bit set 40pc (4932492004), Metral drill HSSG ThW D338 Set 19pc (4932493869)	244	1	4932499475	4058546566395

### 3/3 MAX BITE™ Combination Spanner Set Foam Inserts

- MAX BITE™ open-end grip reduces rounding and stripping.
- Rounded I-Beam handle for comfortable handling grip.
- 15° offset box for better accessibility.
- Chrome alloy steel, chrome plated.

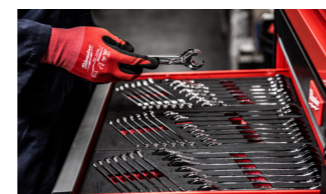
Description	Dimensions (Outer) (H x W x D / mm)	Pack quantity	Min. order quantity	Article Number	EAN Code
① 27 pc MAX BITE™ metric combination spanner foam set	45 x 536 x 417	27	1	4932493247	4058546481186
6mm, 7mm, 8mm, 9mm, 10mm, 11mm, 12mm, 13mm, 14mm, 15mm, 16mm, 17mm, 18mm, 19mm, 20mm, 21mm, 22mm, 23mm, 24mm, 25mm, 26mm, 27mm, 28mm, 30mm, 32mm, 36mm					
Empty 27 pc MAXBITE Combination Spanner Foam Set	45 x 536 x 417	1	1	4932493676	4058546508364
② 22pc MAXBITE™ ratcheting metric combination spanner set	45 x 536 x 417	22	1	4932493248	4058546481193
6mm, 7mm, 8mm, 9mm, 10mm, 11mm, 12mm, 13mm, 14mm, 15mm, 16mm, 17mm, 18mm, 19mm, 20mm, 21mm, 22mm, 24mm, 25mm, 27mm, 30mm, 32mm					
Empty 22 pc MAXBITE Ratcheting Combination Spanner Foam Set	45 x 536 x 417	1	1	4932493677	4058546508371



### MAX BITE™ Flex Head Ratcheting Spanner Set Foam Insert

- 180° pivoting head for greater access to tight spaces.
- MAX BITE™ open-end grip reduces rounding and stripping.
- 144 ratcheting teeth positions giving 2.5° arc swing allowing access in tighter spaces.
- Durable double stacked pawls for longer ratchet life.
- Rounded I-Beam handle for comfortable handling grip.

Description	Dimensions (Outer) (H x W x D / mm)	Pack quantity	Min. order quantity	Article Number	EAN Code
MAX BITE™ Flex Head Ratcheting Spanner Set Foam Insert	45 x 178.5 x 417	15	1	4932479829	4058546376239
8, 9, 10, 11, 12, 13, 14, 15, 16, 17, 18, 19, 20, 21, 22 mm					
Empty 15 pc Maxbite Flex Head Spanner Set Foam Insert	45 x 178.5 x 417	1	1	4932493667	4058546513610



### MAX BITE™ combination spanner set foam insert

- MAX BITE™ open-end grip reduces rounding and stripping.
- Rounded I-Beam handle for comfortable handling grip.
- 15° offset box for better accessibility.
- Chrome alloy steel, chrome plated.

Description	Dimensions (Outer) (H x W x D / mm)	Pack quantity	Min. order quantity	Article Number	EAN Code
MAX BITE™ Combination Spanner Set Foam Insert	45 x 178.5 x 417	15	1	4932479827	4058546376215
8, 9, 10, 11, 12, 13, 14, 15, 16, 17, 18, 19, 20, 21, 22 mm					
Empty 15 pc Maxbite Combination Spanner Set Foam Insert	45 x 178.5 x 417	1	1	4932493665	4058546485368



### MAX BITE™ Ratcheting Combination Spanner Set Foam Insert

- 144 Ratcheting teeth positions giving 2.5° arc swing allowing access in tighter spaces.
- Durable double stacked pawls for long-lasting ratchet life.
- MAX BITE™ open-end grip reduces rounding and stripping.
- Rounded I-Beam handle for comfortable handling grip.

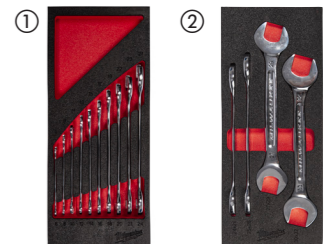
Description	Dimensions (Outer) (H x W x D / mm)	Pack quantity	Min. order quantity	Article Number	EAN Code
MAX BITE™ Ratcheting Combination Spanner Set Foam Insert	45 x 178.5 x 417	15	1	4932479828	4058546376222
8, 9, 10, 11, 12, 13, 14, 15, 16, 17, 18, 19, 20, 21, 22 mm					
Empty 15 pc Maxbite Ratcheting Combination Spanner Set Foam Insert	45 x 178.5 x 417	1	1	4932493666	4058546513603



### Double Open End Spanner Foam Insert Set

- Slim head dimensions for access in tight areas.
- Rounded I-beam handle for comfortably applying torque.
- Ink-filled size labels for easy and quick size identification.
- Chrome finish for corrosion and rust resistance.
- Sets come in a durable foam.

Description	Dimensions (Outer) (H x W x D / mm)	Pack quantity	Min. order quantity	Article Number	EAN Code
① 10pc Double Open End Spanner Foam Insert Set	45 x 178.5 x 417	10	1	4932493629	4058546485009
6x7, 8x9, 10x11, 12x13, 14x15, 16x17, 18x19, 20x22, 21x23, 24x27mm					
② 4pc Double Open End Spanner Foam Insert Set	45 x 178.5 x 417	4	1	4932493630	4058546485016
24x26, 25x28, 27x29, 30x32mm					



## Flare Nut Spanner Foam Insert Set

- Optimized head geometry for secure grip on fasteners to reduce rounding of nuts.
- I-beam handle for more comfort while applying high torque.
- Ink-filled size labels for easy and quick size identification.
- 15° angled heads for better access.
- Set is neatly stored in a durable foam.



Description	Dimensions (Outer) (H x W x D / mm)	Pack quantity	Min. order quantity	Article Number	EAN Code
6pc Flare Nut Spanner Foam Insert Set 8x10, 10x11, 12x14, 13x14, 17x19, 19x22mm	45 x 178.5 x 417	6	1	4932493628	4058546484996

## Double ring offset spanner set foam insert 9pc

- 75° offset handle for better access in tight spaces.
- Rounded I-beam handle for comfortably applying torque.
- Ink-filled size labels for easy and quick size identification.
- Chrome finish for corrosion and rust resistance.
- Premium foam for longer durability, laser cut sizes for easy and quick size identification and red background to identify quickly missing tools.



Description	Dimensions (Outer) (H x W x D / mm)	Pack quantity	Min. order quantity	Article Number	EAN Code
Double ring offset spanner set foam insert 9pc	45 x 178.5 x 417	9	1	4932499086	4058546529550
Replacement double ring offset spanner set foam insert	45 x 178.5 x 417	1	1	4932499087	4058546529567

## Adjustable Wrench Set Foam Insert

- Precision adjustment screw with accurate threads and tight tolerances. The jaws won't back off during use
- Chrome plating for best-in-class rust protection and increased durability
- Ergonomic rounded handle design for a comfortable fit in the hand and less pressure points on the palm
- Slim head design for reaching into tight spaces
- Parallel jaws won't slip or damage finish surfaces
- Permanent lasered inch and mm markings for accurate adjustment
- Lanyard hole



Description	Dimensions (Outer) (H x W x D / mm)	Pack quantity	Min. order quantity	Article Number	EAN Code
3 pc Adjustable Wrench Set Foam Insert 150mm, 200mm, 250mm	45 x 178.5 x 417	3	1	4932492397	4058546417642
Empty 3 pc Adjustable Wrench set Foam Insert	45 x 178.5 x 417	1	1	4932493674	4058546508340



## 1/4", 3/8" & 1/2" Ratchet and Socket Set Foam Insert

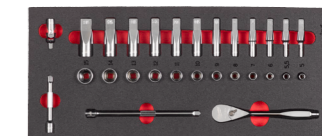
- 90 tooth design with 4 °of arc swing for tight work spaces.
- FOUR FLAT™ sides on socket deter rolling.
- All metal design for maximum durability.
- Premium foam for longer durability, laser cut sizes for easy and quick size identification and red background to identify quickly missing tools.



Description	Dimensions (Outer) (H x W x D / mm)	Pack quantity	Min. order quantity	Article Number	EAN Code
1/4", 3/8", 1/2" Ratchet and Socket Foam Insert Set	45 x 536 x 417	119	1	4932498518	4058546523879
Empty 1/4", 3/8", 1/2" Ratchet and Socket Bare Foam Insert Replacement Foam	45 x 536 x 417	1	1	4932498740	4058546526092

## 1/4" Ratchet and Socket Set Foam Insert

- 90 tooth design with 4 °of arc swing for tight work spaces.
- FOUR FLAT™ sides on socket deter rolling.
- All metal design for maximum durability.



Description	Dimensions (Outer) (H x W x D / mm)	Pack quantity	Min. order quantity	Article Number	EAN Code
1/4" Ratchet and Socket Set Foam Insert	45 x 178.5 x 417	28	1	4932479824	4058546376185
Standard sockets: 5 mm, 5.5 mm, 6 mm, 7 mm, 8 mm, 9 mm, 10 mm, 11 mm, 12 mm, 13 mm, 14 mm, 15 mm / Deep well sockets: 5 mm, 5.5 mm, 6 mm, 7 mm, 8 mm, 9 mm, 10 mm, 11 mm, 12 mm, 13 mm, 14 mm, 15 mm / 76 mm extension, 152 mm extension, universal joint					
Empty 28 pc 1/4" Ratchet and Socket Set Foam Insert	45 x 178.5 x 417	1	1	4932493662	4058546485337



## 1/4" Ratchet and bit socket set foam insert 76pc

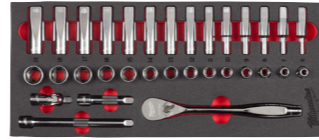
- 90 tooth design with 4 °of arc swing for tight work spaces.
- FOUR FLAT™ sides on socket deter rolling.
- All metal design for maximum durability.
- Premium foam for longer durability, laser cut sizes for easy and quick size identification and red background to identify quickly missing tools.



Description	Dimensions (Outer) (H x W x D / mm)	Pack quantity	Min. order quantity	Article Number	EAN Code
1/4" Ratchet and bit socket set foam insert 76pc					
Ratchet / Standard sockets: : 4mm, 4.5mm, 5mm, 5.5mm, 6mm, 7mm, 8mm, 9mm, 10mm, 11mm, 12mm, 13mm / Deep well sockets: 4mm, 4.5mm, 5mm, 5.5mm, 6mm, 7mm, 8mm, 9mm, 10mm, 11mm, 12mm, 13mm / Torx bit sockets: T8, T10, T15, T20, T25, T27, T30, T40 / Hex bit sockets: 2mm, 2.5mm, 3mm, 4mm, 5mm, 6mm / Drive bit holder / Universal joint adapter / Drive spinner handle / 38mm extension / 76 mm extension / 32pc SHOCKWAVE™ impact duty set	45 x 178.5 x 417	76	1	4932499293	4058546564575
1/4" Replacement ratchet and bit socket set foam insert	45 x 178.5 x 417	1	1	4932499294	4058546564582

## 3/8" Ratchet and Socket Set Foam Insert

- 90 tooth design with 4 ° of arc swing for tight work spaces.
- FOUR FLAT™ sides on socket deter rolling.
- All metal design for maximum durability.



Description	Dimensions (Outer) (H x W x D / mm)	Pack quantity	Min. order quantity	Article Number	EAN Code
3/8" Ratchet and Socket Set Foam Insert	45 x 178.5 x 417	32	1	4932479825	4058546376192
Standard sockets: 6 mm, 7 mm, 8 mm, 9 mm, 10 mm, 11 mm, 12 mm, 13 mm, 14 mm, 15 mm, 16 mm, 17 mm, 18 mm, 19 mm / Deep well sockets: 6 mm, 7 mm, 8 mm, 9 mm, 10 mm, 11 mm, 12 mm, 13 mm, 14 mm, 15 mm, 16 mm, 17 mm, 18 mm, 19 mm / 76 mm extension, 152 mm extension / Universal joint					
Empty 32 pc 3/8" Ratchet and Socket Set Foam Insert	45 x 178.5 x 417	1	1	4932493663	4058546485344

## 1/2" Ratchet and Socket Set Foam Insert

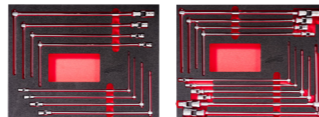
- 90 tooth design with 4 ° of arc swing for tight work spaces.
- FOUR FLAT™ sides on socket deter rolling.
- All metal design for maximum durability.



Description	Dimensions (Outer) (H x W x D / mm)	Pack quantity	Min. order quantity	Article Number	EAN Code
1/2" Ratchet and Socket Set Foam Insert	45 x 178.5 x 417	28	1	4932479826	4058546376208
Standard sockets: 10 mm, 11 mm, 12 mm, 13 mm, 14 mm, 15 mm, 16 mm, 17 mm, 18 mm, 19 mm, 20 mm, 21 mm, 22 mm, 23 mm, 24 mm / Deep well sockets: 10 mm, 11 mm, 12 mm, 13 mm, 14 mm, 15 mm, 16 mm, 17 mm, 18 mm, 19 mm / 76 mm extension, 127 mm extension					
Empty 28 pc 1/2" Ratchet and Socket Set Foam Insert	45 x 178.5 x 417	1	1	4932493664	4058546485351

## T-bar handle set foam inserts

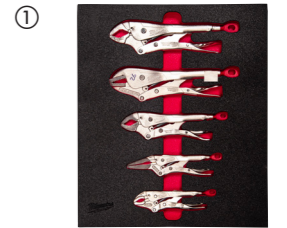
- 180° Durable swiveling socket for best access hard-to-reach angles.
- Sliding handle bar to optimal adjust to different positions for more leverage or narrow spaces.
- Shallow sockets to allow fastening of nuts with longer bolts.
- Premium foam for longer durability, laser cut sizes for easy and quick size identification and red background to identify quickly missing tools.



Description	Dimensions (Outer) (H x W x D / mm)	Pack quantity	Min. order quantity	Article Number	EAN Code
<b>T-bar handle set foam insert 8pc</b>					
7mm, 8mm, 10mm, 12mm, 13mm, 14mm, 17mm, 19mm	45 x 536 x 417	8	1	4932499113	4058546529826
Replacement t-bar handle set foam insert 8pc	45 x 536 x 417	1	1	4932499114	4058546529833
<b>T-bar handle set foam insert 10pc</b>					
7mm, 8mm, 10mm, 12mm, 13mm, 14mm, 15mm, 16mm, 17mm, 18mm	45 x 536 x 417	10	1	4932499295	4058546564599
Replacement t-bar handle set foam insert 10pc	45 x 536 x 417	1	1	4932499296	4058546564605

## TORQUE LOCK™ Locking Pliers Set Foam Insert

- TORQUE LOCK™: Faster set up and easy release when clamping flat and round material. Extra force can be applied to the TORQUE LOCK™ screw for better and more secure grip. Can also be used for hanging / storage purposes.
- Hardened jaws: Better grip force on jobsite material.
- Rust protection: Chrome plated tool increases life by reducing corrosion.
- Lever release design: Traditional release lever for jobsite convenience.
- MAXBITE™ pliers have special jaw geometry for maximum grip.



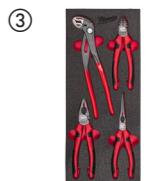
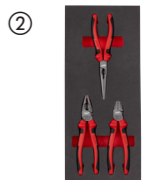
Description	Dimensions (Outer) (H x W x D / mm)	Pack quantity	Min. order quantity	Article Number	EAN Code
① 5PC Locking Plier Foam Insert Set	45 x 357 x 417	5	1	4932493634	4058546485054
Curved 127 mm (4932472263), Flat long nose 150 mm (4932471731), MAXBITE 170 mm (4932471730), Flat 250 mm (4932471726), MAXBITE 250 mm (4932471729)					
Empty 11 pc Grip Pliers Set Foam Insert	45 x 536 x 417	1	1	4932493680	4058546508401
② 11pc TORQUE LOCK™ Locking pliers set foam insert	45 x 536 x 417	11	1	4932493251	4058546481223
TORQUE LOCK™ locking pliers - Curved 127mm(4932472263); TORQUE LOCK™ locking pliers - Curved 170mm(4932471732), TORQUE LOCK™ locking pliers - Curved 250mm(4932471725), TORQUE LOCK™ locking C clamps - Regular pointed pads, 280mm(4932471728), TORQUE LOCK™ locking pliers - Flat long nose, 100mm(4932472262), TORQUE LOCK™ locking pliers - Flat long nose, 150mm(4932471731), TORQUE LOCK™ locking pliers - Flat long nose, 230mm(4932471733), TORQUE LOCK™ locking pliers - MAXBITE, 170mm(4932471730), TORQUE LOCK™ locking pliers - MAXBITE, 250mm(4932471729), TORQUE LOCK™ locking C clamps - Swivel pads, 280mm(4932471727), TORQUE LOCK™ locking C clamps - Swivel pads, 480mm(4932472261)					



## Pliers Set Foam Insert

- Optimum leverage for easy and effortless work.
- Cutting edges induction hardened for cutting hard and soft wires.
- Corrosion protection for longer tool lifetime.
- Lanyard hole for easy attachment to the Milwaukee safety range to allow use at heights.

Description	Dimensions (Outer) (H x W x D / mm)	Pack quantity	Min. order quantity	Article Number	EAN Code
① 2pc Water pump pliers and TORQUE LOCK™ locking pliers set foam insert	45 x 178.5 x 417	2	1	4932493255	4058546481261
TORQUE LOCK™ locking pliers - Curved 250mm(4932471725), Adjustable Water pump pliermm(4932492459)					
Empty 2 pc Water pump & locking pliers Foam Set	45 x 178.5 x 417	1	1	4932493684	4058546508449
② 3pc Pliers set foam insert	45 x 178.5 x 417	3	1	4932493256	4058546481278
Combination Plier 180mm (4932492462), Diagonal cutting plier 160mm (4932492463), Long nose plier 205mm (4932492465)					
Empty 3 pc Pliers Set Foam Insert	45 x 178.5 x 417	1	1	4932493685	4058546508456
③ 4PC Pliers Foam Insert Set	45 x 178.5 x 417	4	1	4932493631	4058546485023
Combination pliers 180mm (4932492462), Diagonal cutter 160mm (4932492463), Long nose pliers 205 (straight) (4932492465), Waterpump pliers adjustable 240mm (4932492459)					



## VDE Pliers Set Foam Insert

- VDE (DIN EN/IEC 60900) certified tools. Tested to 10,000 volts and guaranteed to 1,000 volts. Tested against cold to -40°.
- Steel blades are fully forged, hardened and tempered for best durability. Grey titanium surface finish is non reflective and ensures maximum corrosion resistance.
- Induction hardened cutting edges to cut even the hardest of materials.
- Precision machined joint for maximum power transmission with optimum leverage for easy and effortless work.
- Ergonomic grip with softgrip for comfortable handling and good grip.



Description	Dimensions (Outer) (H x W x D / mm)	Pack quantity	Min. order quantity	Article Number	EAN Code
① 4pc VDE Pliers set foam insert  160mm VDE Diagonal cutter, 205mm VDE long nose plier, 180mm VDE combination plier, 160mm VDE Wire stripping plier	45 x 178.5 x 417	4	1	4932493250	4058546481216
Empty 4 pc Insulated Pliers Set Foam Insert	45 x 178.5 x 417	1	1	4932493679	4058546508395
Empty 4 pc VDE Pliers Set 2 Foam Insert	45 x 178.5 x 417	1	1	4932493675	4058546508357

## General Tooling Set Foam Insert

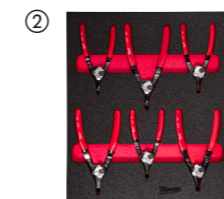
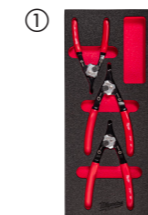
- Hex Key Set: Twist and lock case for easy access to keys. Ball end for 30° access to any hex nut
- Pliers: Optimum leverage for easy and effortless work. Cutting edges induction hardened for cutting hard and soft wires
- Engineer Hammer: Reinforced head connection for added durability. Hickory handle providing low vibration
- Hacksaw: Tough metal frame, supports higher tension (25,000 PSI / 250 lbs)
- Magnetic Tape Measure: Strong magnet at start of the tape allows easy hooking onto flat surfaces and round pipe. Compact and ergonomic design



Description	Dimensions (Outer) (H x W x D / mm)	Pack quantity	Min. order quantity	Article Number	EAN Code
15pc General tooling foam set	45 x 536 x 417	15	1	4932493257	4058546481285
Hex Key 9 Pc Set (4932478621), Diagonal cutting plier 160mm (4932492463), Combination Plier 165mm (4932492461), Adjustable Water pump plier 250mm (4932492459), Hickory Engineers Hammer 500g (4932478668), Hacksaw (48220050), Magnetic Tape Measure 5m - 16ft (4932498769)					
Empty 15 pc General Tooling Foam Set	45 x 536 x 417	1	1	4932493686	4058546508463

## Circlip Pliers Foam Insert Set

- Easier and quicker internal-external conversion with anti-slip grooved dial.
- All-metal convertible dial for resistance against wear and prevents reduction in joint integrity.
- Slip-resistant grips with double-dipped handles.
- Stored in a premium foam.



Description	Dimensions (Outer) (H x W x D / mm)	Pack quantity	Min. order quantity	Article Number	EAN Code
① 3PC Circlip Pliers Foam Insert Set  Medium Circlip Plier - Straight - 1.2mm tip (4932492490), Large Circlip Plier - Straight - 1.8mm tip (4932492493), Large Circlip Plier - 90° - 1.8mm tip (4932492495)	45 x 178.5 x 417	3	1	4932493632	4058546485030
② 6PC Circlip Pliers Foam Insert Set  Small Circlip Plier - Straight - 0.9mm tip (4932492487), Small Circlip Plier - 45° - 0.9mm tip (4932492488), Medium Circlip Plier - Straight - 1.2mm tip (4932492490), Large Circlip Plier - Straight - 1.8mm tip (4932492493), Large Circlip Plier - 45° - 1.8mm tip (4932492494), Large Circlip Plier - 90° - 1.8mm tip (4932492495)	45 x 357 x 417	6	1	4932493633	4058546485047

## Hammer set foam insert

- Precision balanced design for optimized control
- Durable grip handle with an anti-slip design
- Reduced vibration and minimized rebound



Description	Dimensions (Outer) (H x W x D / mm)	Pack quantity	Min. order quantity	Article Number	EAN Code
Empty 2 pc Engineer & Dead blow hammer Foam set	45 x 178.5 x 417	1	1	4932493682	4058546508425
2pc Ball peen and dead blow hammer set foam insert	45 x 178.5 x 417	2	1	4932493254	4058546481254
450 g Ball Peen Hammer (4932492346), 790 g Dead Blow Hammer (4932492350)					
Empty 2 pc Ball Peen & Dead blow hammer Foam set	45 x 178.5 x 417	1	1	4932493683	4058546508432

## Screwdriver and prybar set foam insert

NEW

- Comfortable Tri-Lobe handle optimized for maximum user comfort and high torque applications.
- Pry bars with I-beam design and all-metal core for added durability.
- In-handle bit storage for quick and easy bit access with the 14in1 TX Multi-bit screwdriver.



Description	Pack quantity	Min. order quantity	Article Number	EAN Code
38 pc Screwdriver and prybar set foam insert	38	1	4932500755	4058546620578
Replacement foam screwdriver and prybar set foam insert	1	1	4932500761	4058546620639

## 1/4" and 3/8" Ratchet and socket and bit socket set foam insert

NEW

- FOUR FLAT™ sides on socket deter rolling.
- 90 tooth design ratchet with 4 °of arc swing for tight work spaces.
- Single forged piece bit socket design adds durability in high torque applications.
- Wobble functionality of wobble extension provides additional access in tight spaces and can also be used as a standard extension when fully inserted.



Description	Pack quantity	Min. order quantity	Article Number	EAN Code
153 pc 1/4" and 3/8" Ratchet and socket and bit socket set foam insert	153	1	4932500756	4058546620585
Replacement foam for 1/4" and 3/8" Ratchet and Socket and Bit Socket Set Foam Insert	1	1	4932500762	4058546620646

## 1/2" Ratchet and impact socket set foam insert

NEW

- FOUR FLAT™ sides on socket deter rolling.
- 90 tooth design ratchet with 4 °of arc swing for tight work spaces.
- Single forged piece bit socket design adds durability in high torque applications.



Description	Pack quantity	Min. order quantity	Article Number	EAN Code
60 pc 1/2" Ratchet and impact socket set foam insert	60	1	4932500757	4058546620592
Replacement foam for 60 pc 1/2" ratchet and impact socket set foam insert	1	1	4932500763	4058546620653

## Mixed spanner set foam insert

NEW

- MAX BITE™ open-end grip reduces rounding and stripping.
- Rounded I-Beam handle for comfortable handling grip.
- Slim head dimensions of double open end spanners for access in tight areas.
- Ink-filled labels for clear visibility.
- Double ring offset spanners with 75° offset for better access in tight spaces.



Description	Pack quantity	Min. order quantity	Article Number	EAN Code
36 pc Mixed spanner set foam insert	36	1	4932500758	4058546620608
Replacement foam for 36 pc mixed spanner set foam insert	1	1	4932500764	4058546620660

## Spanner, lights, cutting and measuring set foam insert

NEW

- MAX BITE™ open-end grip reduces rounding and stripping.
- Rounded I-Beam handle for comfortable handling grip.
- 144 Ratcheting teeth positions giving 2.5° arc swing allowing access in tighter spaces.
- Ink-filled labels for clear visibility.
- 144 Ratcheting teeth positions giving 2.5° arc swing allowing access in tighter spaces.
- TRUEVIEW™ high definition lighting with up to 400 lumens



Description	Pack quantity	Min. order quantity	Article Number	EAN Code
36pc Spanner, lights, cutting and measuring set foam insert	36	1	4932500759	4058546620615
Replacement foam for 36 pc spanner, lights, cutting and measuring set foam insert	1	1	4932500765	4058546620677

## Pliers and hammer set foam insert

NEW

- Over moulded handle design for increased grip and reduced vibration while using the fiberglass engineer hammer.
- Optimum leverage for easy and effortless work with the MILWAUKEE® pliers.
- Easier and quicker internal-external conversion with anti-slip grooved and all metal dial for the circlip pliers.



Description	Pack quantity	Min. order quantity	Article Number	EAN Code
14pc Pliers and hammer set foam insert	14	1	4932500760	4058546620622
Replacement foam for 14pc pliers and hammer set foam insert	1	1	4932500766	4058546620684

## Cutting and measuring set foam insert

- Compact Hacksaw: Tool free blade change for changing blades up to 10x faster & accepts 12" blades
- Snap Knife: Metal lock for maximum durability and longer lifetime
- Magnetic Tape Measure: Strong magnet at start of the tape allows easy hooking onto flat surfaces and round pipe. Compact and ergonomic design



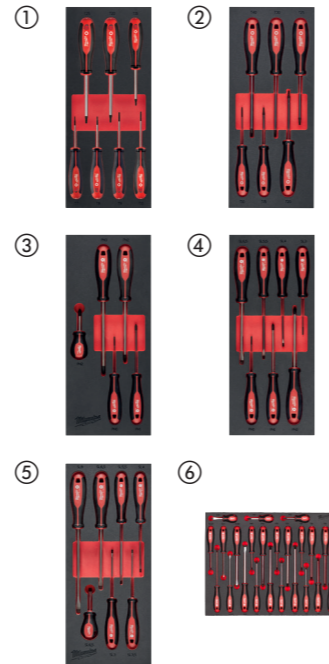
Description	Dimensions (Outer) (H x W x D / mm)	Pack quantity	Min. order quantity	Article Number	EAN Code
3pc Cutting and measuring set foam insert	45 x 178.5 x 417	3	1	4932493252	4058546481230
Magnetic Tape Measure 5m - 16ft (4932498769), Snap knife 18mm (48221961), Compact Hacksaw (4932500041)					
Empty 3 pc Cutting and Measuring Foam Insert	45 x 178.5 x 417	1	1	4932493681	4058546508418



## Tri-lobe Screwdriver Foam Inserts

- Comfortable Tri-Lobe handle optimized for maximum user comfort and high torque applications
- Hardened magnetic tips for maximum durability and fastener retention
- Wrench ready shank allows extra leverage to be applied
- Anti-roll, 3 sided collar on the handle

Description	Dimensions (Outer) (H x W x D / mm)	Pack quantity	Min. order quantity	Article Number	EAN Code
① 7 pc Tri-Lobe Screwdriver TX Set 1 Foam Insert T7x65, T8x65, T9x75, T10x75, T15x75, T20x100, T25x100	45 x 178.5 x 417	7	1	4932492391	4058546417581
Empty 7 pc Screwdriver TX Set 1 Foam Insert	45 x 178.5 x 417	1	1	4932493669	4058546508296
② 6 pc Tri-Lobe Screwdriver TX Set 2 Foam Insert T10x75, T15x75, T20x100, T25x100, T30x125, T40x125	45 x 178.5 x 417	6	1	4932492392	4058546417598
Empty 6 pc Screwdriver TX Set 2 Foam Insert	45 x 178.5 x 417	1	1	4932493670	4058546508302
③ 5 pc Tri-Lobe Screwdriver PH Set Foam Insert PH0x75, PH1x100, PH2x125, PH3x150, Stubby PH2x45	45 x 178.5 x 417	5	1	4932492393	4058546417604
Empty 5 pc Screwdriver PH Set Foam Insert	45 x 178.5 x 417	1	1	4932493671	4058546508319
④ 7 pc Tri-Lobe Screwdriver SL Set Foam Insert SL 0.5x3x75, SL 0.6 x 3.5 x 100, SL 0.8x4x100, SL 1.0x5.5x125, SL 1.2x6.5x125, SL 1.6x8x175, Stubby SL 1.2x6.5x45	45 x 178.5 x 417	7	1	4932492395	4058546417628
Empty 7 pc Screwdriver SL Set Foam Insert	45 x 178.5 x 417	1	1	4932493673	4058546508333
⑤ 7 pc Tri-Lobe Screwdriver SL & PH Set Foam Insert SL 0.5x3x75, SL 0.8x4x100, SL 1.0x5.5x125, SL 1.2x6.5x125, PH0x75, PH1x100, PH2x125	45 x 178.5 x 417	7	1	4932492394	4058546417611
Empty 7 pc Screwdriver SL & PH Set Foam Insert	45 x 178.5 x 417	1	1	4932493672	4058546508326
⑥ Tri-lobe Screwdriver Foam Insert SL 2.5 / SL 3 / SL 4 / SL 5.5 / SL 6 / SL 6.5 / SL 8, PH 0 / PH 1 / PH 2 / PH 2 / PH 3, PZ 0 / PZ 1 / PZ 2 / PZ 2 / PZ 3, T 10 / T 15 / T 20 / T 25 / T 30 / T 40	45 x 536 x 417	23	1	4932479830	4058546376246
Empty 23 pc Tri-lobe Screwdriver Foam Insert	45 x 536 x 417	1	1	4932493668	4058546508289



## VDE Tri-lobe Screwdriver Set Foam Insert

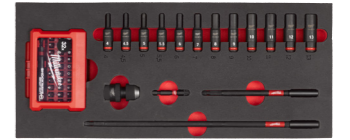
- VDE tested to 10000 V and guaranteed to 1000 V
- Slim shank diameter for access to low lying screw applications
- Comfortable Tri-Lobe handle optimized for maximum user comfort and high torque applications
- Permanent visible ID markings allows for quick tool identification

Description	Dimensions (Outer) (H x W x D / mm)	Pack quantity	Min. order quantity	Article Number	EAN Code
① 8pc VDE Tri-Lobe screwdriver set foam insert PH0x60, PH1x80, PH2x100, 0.4x2.5x75, 0.6x3.5x100, 0.8x4x100, 1.0x5.5x125, 1.2x6.5x150	45 x 178.5 x 417	8	1	4932493249	4058546481209
Empty 8 pc Insulated Screwdriver set Foam Insert	45 x 178.5 x 417	1	1	4932493678	4058546508388



## 1/4" SHOCKWAVE™ IMPACT DUTY Foam Inserts

Description	Pack quantity	Min. order quantity	Article Number	EAN Code
1/4" Sockets deep foam set (17pc) SHOCKWAVE™ IMPACT DUTY 1/4" deep sockets: 4/4, 5/5, 5.5/6, 7/8, 9/10/11/12/13mm, magnetic bit holder 152 mm, magnetic bit holder 305mm, screwdriving bit set 32 pcs, adaptor 1/4" Hex --> 1/4" square, adaptor 1/4" square --> 1/4" Hex, Foam 417x177mm	17	1	4932493386	4058546482572
Replacement foam for 1/4" deep sockets. Size 417x177mm	1	1	4932493385	4058546482565



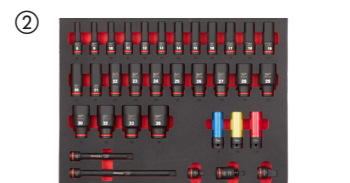
## 3/8" SHOCKWAVE™ IMPACT DUTY Foam Inserts

Description	Pack quantity	Min. order quantity	Article Number	EAN Code
3/8" sockets STD foam set (23pc) SHOCKWAVE™ IMPACT DUTY 3/8" STD sockets: 6/7/8/9/10/11/12/13/14/15/16/17/18/19/20/21/22mm, extension - 150mm, extension - 250mm, adaptor 3/8" square --> 1/4" square, adaptor 3/8" square --> 1/2" square, 3/8" swivel, adaptor 3/8" square --> 1/4" Hex, Foam 417x177mm	23	1	4932493388	4058546482596
3/8" Sockets deep foam set (23pc) SHOCKWAVE™ IMPACT DUTY 3/8" deep sockets: 6/7/8/9/10/11/12/13/14/15/16/17/18/19/20/21/22mm, extension - 150mm, extension - 250mm, adaptor 3/8" square --> 1/4" square, adaptor 3/8" square --> 1/2" square, swivel 3/8", adaptor 3/8" square --> 1/4" Hex, Foam 417x177mm	23	1	4932493390	4058546482619
Replacement foam for 3/8" STD sockets. Size 417x177mm	1	1	4932493387	4058546482589
Replacement foam for 3/8" deep sockets. Size 417x177mm	1	1	4932493389	4058546482602



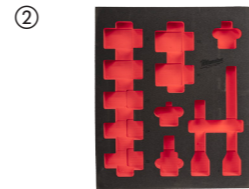
## 1/2" SHOCKWAVE™ IMPACT DUTY Foam Inserts

Description	Pack quantity	Min. order quantity	Article Number	EAN Code
1/2" Sockets STD foam set (32pc) SHOCKWAVE™ IMPACT DUTY 1/2" STD socket: 8/9/10/11/12/13/14/15/16/17/18/19/20/21/22/23/24/25/26/27/28/29/30/32mm, Automotive Set 1/2": 17/19/21mm, extension - 150mm, extension - 250mm, adaptor 1/2" square --> 3/8" square, adaptor 1/2" square --> 3/4" square, 1/2" swivel, Foam with plastic base 417x536mm	32	1	4932493392	4058546482633
1/2" Sockets deep foam set (34pc) SHOCKWAVE™ IMPACT DUTY 1/2" deep Sockets: 8/9/10/11/12/13/14/15/16/17/18/19/20/21/22/23/24/25/26/27/28/29/30/32/33/36mm, Automotive Set 1/2": 17/19/21mm, extension - 150mm, extension - 250mm, adaptor 1/2" square --> 3/8" square, adapter 1/2" square --> 3/4" square, 1/2" Swivel, Foam with plastic base 417x536mm	34	1	4932493394	4058546482657
Replacement foam with plastic base for 1/2" STD sockets. Size 417x536mm	1	1	4932493391	4058546482626
Replacement foam with plastic base for 1/2" deep sockets. Size 417x536mm	1	1	4932493393	4058546482640



## 3/4" SHOCKWAVE™ IMPACT DUTY Foam Inserts

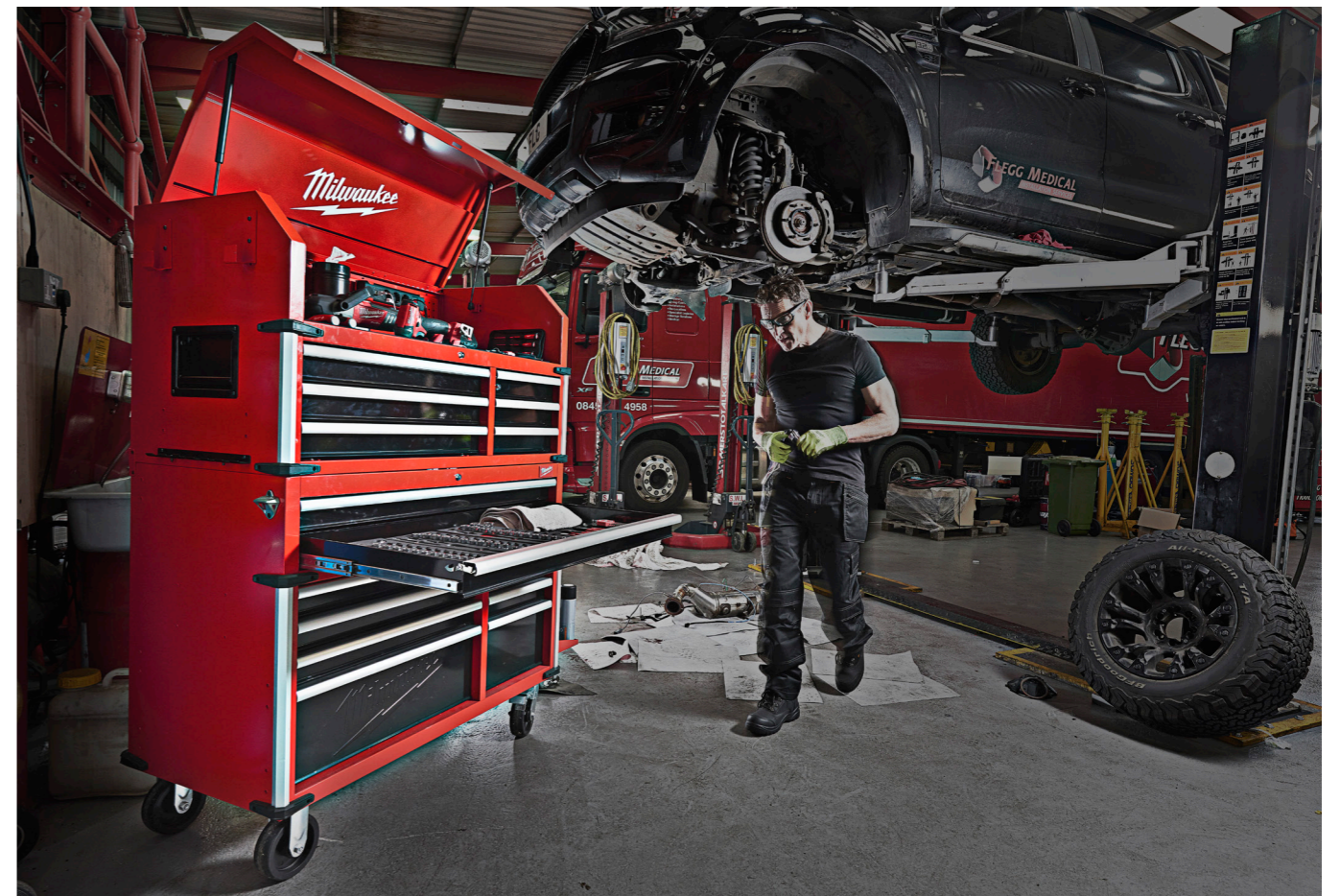
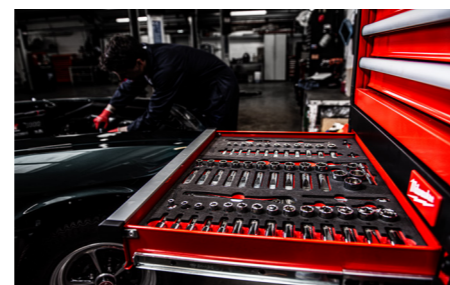
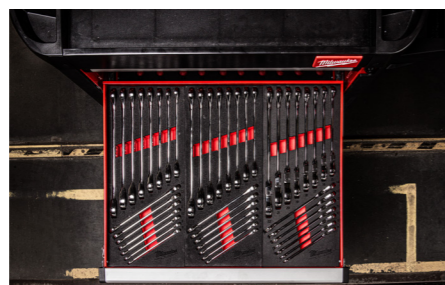
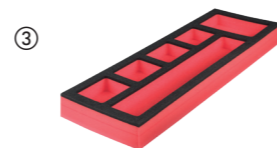
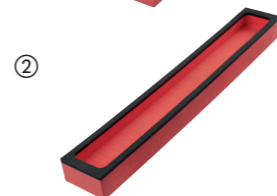
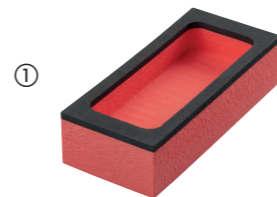
Description	Pack quantity	Min. order quantity	Article Number	EAN Code
3/4" Sockets STD foam set (12pc)	12	1		
① SHOCKWAVE™ IMPACT DUTY 3/4" STD sockets: 22/24/27/30/32/33/36mm, extension 150mm, extension 250mm, adaptor 3/4" square --> 1/2" square, 3/4" swivel, adaptor 3/4" square --> 1" square, Foam with plastic base 417x355mm			4932493396	4058546482671
3/4" Sockets deep foam set 1-12pc	12	1		
② SHOCKWAVE™ IMPACT DUTY 3/4" deep sockets: 22/24/27/30/32/33/36mm, extension 150mm, extension 250mm, adaptor 3/4" square --> 1/2" square, 3/4" swivel, adaptor 3/4" square --> 1" square, Foam with plastic base 417x355mm			4932493398	4058546482695
Replacement foam with plastic base for 3/4" STD sockets. Size 417x355mm	1	1	4932493395	4058546482664
Replacement foam with plastic base for 3/4" deep sockets. Size 417x355mm	1	1	4932493397	4058546482688



## Empty Foam Inserts

- High density of foam improves durability and resistance to abrasion
- Quick and easy identification of tools and accessories due to the red background
- Laser cut foam to maximize the space in the 46" Steel Storage
- Ideal to store additional sockets, accessories, coins, screws and other small parts

Description	Dimensions (Outer) (H x W x D / mm)	Pack quantity	Min. order quantity	Article Number	EAN Code
① Small Foam for 46" Steel Storage	45 x 178.5 x 78	1	1	4932492389	4058546417567
② Large Foam for 46" Steel Storage	45 x 536 x 78	1	1	4932492390	4058546417574
③ Empty Foam for 46" Steel Storage Width 165mm	45 x 165 x 496	1	1	4932493635	4058546485061
④ Empty Foam for 46" Steel Storage Width 115mm	45 x 115 x 496	1	1	4932493636	4058546485078





Nothing but **HEAVY DUTY.**<sup>TM</sup>

**Techtronic Industries UK Ltd.**

Suite A, Second Floor

Marlow International

Parkway

Marlow

Bucks SL7 1YL

Tel: +44 (0) 1628 894400

Fax: +44 (0) 1628 894401

Distributed by: